



# AUSTRALIA'S LARGEST SIMMENTAL BULL SALE

10AM - MONDAY 25<sup>TH</sup> JULY 2022, CQLX GRACEMERE

STUDS FROM EVERY MAINLAND STATE IN AUSTRALIA  
WITH OVER 300 YEARS OF COMBINED BREEDING

**114**  
LOTS

**14**  
VENDORS





### RAY WHITE RURAL & LIVESTOCK BLACKALL



ANDREW TURNER  
0427 584 166

LICENSED AUCTIONEERS  
SELLING WEEKLY AT BLACKALL SALEYARDS  
AUCTIONS PLUS & PRIVATE Paddock SALES  
LIVESTOCK FINANCE  
FEEDLOT SERVICES  
RURAL PROPERTY SPECIALIST



JOE GROVE  
0428 958 639



LIAM KIRKWOOD  
0457 577 747

### RAY WHITE RURAL & LIVESTOCK TOWNSVILLE

AWARD WINNING LICENSED AUCTIONEER  
SELLING WEEKLY AT CHARTERS TOWERS SALEYARDS  
AUCTIONS PLUS & PRIVATE Paddock SALES  
RURAL PROPERTY SPECIALIST

### RAY WHITE RURAL & LIVESTOCK CORPORATE

NATIONAL LIVESTOCK MANAGER  
PATON FITZSIMONS  
0427 574 355



### RAY WHITE RURAL & LIVESTOCK GRACEMERE

GARY WENDT - 0427 184 875



COLIN GOODWIN  
0429 829 143



LICENSED AUCTIONEERS

SELLING WEEKLY AT GRACEMERE SALEYARDS  
AUCTIONS PLUS, PRIVATE Paddock SALES & STUD STOCK SALES  
RURAL PROPERTY SPECIALIST  
PROPERTY CLEARING SALES



MATTHEW OLSSON  
0428 829 263

SELLING AGENTS FOR THE  
QUEENSLAND SIMMENTAL BULL SALE  
25TH JULY 2022 - CQLX GRACEMERE



**PURCHASE ALL YOUR SIMMENTAL BULLS  
AT ONE TIME TO SAVE ON TIME AND TRAVEL COSTS**

**TIGHTEST ENTRY CONDITIONS FOR ANY SIMMENTAL BULL SALE IN QUEENSLAND  
AND POSSIBLY AUSTRALIA:**

- All bulls entered are 8/8 registered purebred with the Simmental Association of Australia or Fleckvieh Association of Australia to guarantee buyers of hybrid vigour which is critical for an F1 cross.
- All bulls DNA verified to sire and tested Pesti-Virus Free
- All bulls Vet Checked, Morphology Tested, Mouthed and Scanned
- No body clipping or hoof trimming on all Bulls
- Minimum vaccinations. 3 Germ Blooded (Tick Fever), 7-1, 3-day, Pestivirus, Vibrio and Botulism
- All studs minimum JBAS 6
- Strict minimum and maximum weight limits apply to prevent the sale becoming a feeding contest
- Most interstate bulls acclimatised in Queensland prior to the sale
- Bulls previously advertised for sale are ineligible for inclusion in the sale

**FIND OUT MORE AT  
[www.qldsimentalbullsale.com.au](http://www.qldsimentalbullsale.com.au)**



# VISION FOR THE SALE

*The preferred place to buy and sell Simmental Bulls in Australia*

In 2017 a number of Simmental Breeders saw the need for one Simmental Bull sale based close to the Fitzroy Basin in Queensland. The sale provides buyers the opportunity to purchase all of their Simmental Bulls at one time saving on both travel costs and time whilst also providing access to new and varied genetics.

Foundation vendors also identified that sale conditions needed to be extremely tight to ensure that only the highest quality of bulls are offered and that ongoing participation in the sale needed to be based on performance (selling average and clearance rates).

Initially most Simmental Studs in Queensland were invited to participate in the sale to sell bulls, promote their existing sales and promote the Simmental Breed in general. Ultimately for a variety of reasons the majority of these studs chose not to participate. In hindsight this proved of benefit to the sale as it allowed Australia Wide participation thereby increasing diversity of genetics offered to the astute bull buyer.

## SALE LOCATION - CQLX

CENTRAL QUEENSLAND LIVESTOCK EXCHANGE, GRACEMERE

*One modern facility combined with some of Australia's oldest Simmental Studs*

The Queensland Simmental Bull Sale selected the Central Queensland Livestock Exchange (formerly known as the Gracemere Saleyards) as the preferred selling complex for the sale given its closeness to the Fitzroy Basin and its modern facilities. The complex commenced operations in January 1953 and is situated 8 kms west of Rockhampton on the Capricorn Highway

leading to the Central Highlands and the Central Western centres of Barcaldine, Blackall, Longreach and Winton. The facility has the capacity to sell over 5000 head of cattle each week at its Wednesday Prime/Store Sale and includes a café, function room, feedlot and dedicated spelling yards.

## BULL WALK

Once again in 2022 a "Bull Walk" will occur on Sunday 24 July. This is a great opportunity on the day prior to sale to have a really good look at all lots in large pens enabling the prospective buyer to:

- A. Make a well informed assessment of structural correctness;
- B. Have a close look at feet and step;
- C. Observe the temperament of bulls; and
- D. Talk to vendors about their stud breeding programs.



All bulls are available for viewing from Sunday 24<sup>th</sup> July at the selling complex.

Independent or personal viewing of all lots is also available at request.

To arrange a guided personal viewing (available from Saturday evening) contact one of the selling agents or Stud Stock Marketing Services on 0416 229 171.

# 2021 QUEENSLAND SIMMENTAL BULL SALE REPRESENTS GREAT VALUE

*The Queensland Simmental Bull Sale at CQLX Gracemere in 2021 represented great value for buyers with no pumped up prices and quality bulls available for every budget.*

A 100% clearance rate was achieved with 82 lots averaging \$12,450 providing access to quality Simmental Bulls sourced from every mainland state - Australia wide. With no lots run up and all bulls meeting the extremely tight entry conditions results were as follows:

\$5000 → \$10,000	\$10,001 → \$15,000	\$15,001 → \$20,000	\$20,001 → \$25,000
36 lots	29 lots	15 lots	2 lots

### Highlights included:

- A. During the sale and in the months post sale vendors have sold stud sires into at least 8 Queensland stud based operations with a further 8 sires sold into stud operations from other states in Australia.
- B. The two top priced bulls went into large scale Queensland Commercial Cross Breeding Operations.

### Outlook for the 2022 Sale - 25 July 2022, CQLX (Gracemere)

- A. Quality will be even better as a result of studs selecting sires of a type truly suited to the Queensland producer.
- B. The logistics supply chain has improved meaning that more bulls will make it to sale.

### What makes the Queensland Simmental Bull Sale different?

1. Extremely tight entry conditions to guarantee quality of product.
2. Diverse genetics. Where else in Australia (if not worldwide) can over 100 carefully selected Simmental bulls from 2400 registered females and approximately 300 recipis be accessed at one time.
3. Size. The largest Simmental Bull Sale in Australia for the genuine article (i.e. all bulls purebred Simmental/Fleckvieh) with all lots registered and DNA verified to guarantee hybrid-vigour.
4. A number of vendors have reciprocal or other arrangements in place with Simmental operations elsewhere on the globe including the United States, Canada and New Zealand.
5. Vendors include studs with large scale commercial operations, cropping operations, sheep and other agricultural operations along with others vendors diversified in non-farming operations who know the commercial value of livestock and land.



# SIMMENTALS EMERGE AS POPULAR PLAYER IN THE QUEENSLAND CATTLE MARKET

by Jacinta Cummins

Simmentals have slowly been building their popularity in the Queensland market over the last decade and now commercial producers are turning to the breed for better weight for age and in turn, improved profits.

June saw a new record set for the highest priced Simmental to be sold at auction in Queensland with the sale of Meldon Park Q52 for \$38,000 to George and Clayton Bartolo, Carrinyah Pastoral, Nebo at the Ag-Grow Premier Multi-Breed Beef Bull Sale in Emerald.

Paton Fitzsimons who is National Livestock Director for Ray White Rural said the growing trend is to use Simmentals in cross breeding operations.

"Over the last 10 years, there has been a big swing in Western Queensland, particularly in Central Queensland, away from purebreds to crossbreds and the Simmental breed is really starting to make a footprint on this market," he said.

"These breeders are wanting improved weight gains and hybrid vigour.

"The Simmental deliver on weight for age and they also meet a lot more buyers' selection criteria: the big supermarket players like Coles want them and the feedlotters just can't get enough of them.

"There's a lot more marketability for a Simmental crossbred.

"When you can have a crossbred calf weighing 350 kilograms at 10 months, but a 10-month-old purebred is only weighing 300kgs, then that's a big difference to your profit per head."

Some southern studs have decided to dip their toe into the Queensland market with more than half the vendors which sold at the inaugural Queensland Simmental Bull Sale held at Gracemere on August 2 coming from New South Wales, Victoria and South Australia.

The sale offered 82 bulls from 12 vendors with 100% clearance, a top of \$22,000 and an average of \$12,207.

Steve Manwell is Managing Director for Stud Stock Marketing Services and said the results spoke for themselves.

"Simmental infused cattle are increasingly being recognised as the cross breed of choice for northern beef herds when considering sale price and clearance rates for all Simmental Sales in Queensland," he said.

"Originally a dual-purpose breed, the benefits of higher milk production gained from Simmental infused females are not lost on calves nor on commercial producers' hip pockets. This differentiates the Simmental when comparing it to other beef breeds like the Charolais and Limousin.

"Increasingly Simmental cross progeny are finding popularity with both domestic and global beef markets and this gives producers the opportunity to manage risk by hedging their bets both ways.

"Simmental simply makes good business sense."

For Yerwal Estate Simmental Stud principal, Regan Burow, selling into Queensland from his base near Naracoorte, South Australia was simply a matter of the timing being right.

"It was a combination of Queensland wanting traditional Simmental bulls and the southern market down here moving more towards a black Simmental," he said.

"We've been in Simmentals since the early 70s and I'm a very passionate Simmental breeder and the demand for the type of bulls we breed has been going from strength to strength in Queensland so it was always part of our business plan to expand up there."

Brodhi Carracher from Grangeburn Simmentals, Wannan in western Victoria had also earmarked Queensland as a market he wanted to tap into.

"It was always something we were aiming to do [expand our traditional bull sales to Queensland], and this year was a great opportunity to do that," he said.

"As it turns out, Covid-19 affected us holding on property sales or even having potential buyers come to inspect the bulls in Victoria, so selling in Queensland gave us a face-to-face sale opportunity rather than just an online one."

Both Regan and Brodhi had always planned on sending their bulls to Queensland to acclimatise before the sale, but border closures meant they had to select fitters based off online interactions and phone calls.

For Brodhi this was the most nerve wracking element of the process, but both he and Regan selected Jason Jeynes and Julie Sheehan of JJ Fitting, Dalma for their bull preparation and presentation.

JJ Fitting prepared 49 of the 82 bulls offered at the sale.

Julie said while it was the first time that JJ Fitting had prepared a significant offering of Simmentals, that the same principles applied as they do for any breed.

"It's about the vendors offering a product which is suited to the area and us then doing our best to prepare and present that product at its best," she said.

"The CQ breeders want a Simmental that can cope with this area including the challenges of heat and ticks.

"All the bulls offered at the sale met this criteria.

"What drives JJ Fitting is getting the best outcome for the animal and the best outcome for our vendors.

"We do what we would want someone else to do for us if we were in their shoes."



Brodhi Carracher, Grangeburn Simmentals. Photo Grangeburn Simmentals

to the bulls to the sales complex and I will be doing it again.

"For us moving forward, it is about continuing to expand our market into Queensland and also improving our online sales profile which we have been working on since Covid started."

Now the dust has settled, what is the future of Simmentals in Queensland?

Steve Manwill sums it up succinctly.

"The Australian Simmental is credited to many individuals, some of whom have dedicated a lifetime to the breed and the smart genetic selections made by them.

"Today's Simmental wasn't bred overnight, it certainly didn't happen by chance and the future for Simmental in Australia looks extremely bright."

And for both Regan and Brodhi, it was exactly what they would have done themselves.

Brodhi said one of the biggest drawcards of the whole process was JJ Fitting's location near Rockhampton, particularly during Beef 2021.

"I wasn't even sure if I was going to make it up for the sale with the border closures, but we did manage to get there, but I really had to entrust Jason and Julie with everything from vaccinations to scans and photography," he said.

"Ideally I will travel up more to lend a hand in the lead up to the next sale,

but it really couldn't have gone better considering the circumstances with Covid."

Regan agreed, describing the foray into the Queensland market as the most enjoyable sale he's ever held.

"We got to the sale in the end, the bulls were absolutely immaculately presented and all I had to do was walk in and speak to my clients," he said.

"It was one of the best experiences I've had because I didn't have the stress of organising everything from the catering



Paton Fitzsimons, National Livestock Director, Ray White Rural. Photo Supplied

## INSURE YOUR BULLS

through Nutrien Insurance, QLD Simmental Bull Sale's preferred insurance broker.

See our representatives on the day to get cover from the fall of the hammer.

<b>Contact:</b>	<b>Kiah Charles</b> 0409 380 504	<b>Brett Kirkbride</b> 0429 033 988	<b>Carol O'Connor</b> 0428 721 737	<b>Jaime Burns</b> 0407 016 074
-----------------	-------------------------------------	--	---------------------------------------	------------------------------------

Nutrien Ag Solutions can also arrange Farm Insurance, with discounts given to all Agforce members.

Nutrien Ag Solutions ensures your risk protection needs are covered.

Options include but not limited to:

- Farm
- Motor
- Household
- Landlord
- Commercial
- Aviation
- Marine
- Strata
- Cyber
- Fleet

Nutrien Ag Solutions Limited is an authorised representative of Marsh Advantage Insurance Pty Ltd and is authorised to deal in, and provide financial product advice in connection with, general insurance products.



Grangeburn Quickdraw sold to the Hampson Family, Springfield Simmentals, Monto for \$20,000. Photo Brodhi Carracher



Julie Sheehan and Renee Rutherford, JJ Fitting Services, Dalma. Photo by QLC



Yerwal Estate Queensland Q005 Lot 12 QSBS sold to Rockview Cattle Co, Rockhampton for \$18,500. Photo Regan Burow

Nutrien Ag Solutions is an authorised representative of MARSH ADVANTAGE INSURANCE

Nutrien Ag Solutions

# ROSEMOUNT GRAZING INCREASING PRODUCTIVITY WITH SIMMENTAL CROSS BREEDING

Rosemount is located southeast of the Barcardine township in western Queensland. The property is owned by the Manning family and run by their manager Lee Grieve. The Country on Rosemount is comprised of improved pulled Gidgee/ Buffel country with sections of open Mitchel grass downs and spinifex ridges.

The Manning family run a predominantly Charolais/Charbray/Brahman crossbreeding herd producing high quality offspring that are grown out to meet domestic feeder markets across the eastern states of Australia.

Simmental bulls have been introduced into the Rosemount breeding operation as the option for their maiden heifers. They are experiencing great success with this cross as the natural low birth weight of the Simmental cattle is eliminating the

loss of maiden females. They have also opted to go this way as the weight gains once the calves are on the ground speak for themselves with their Simmental cross calves out performing the Charolais cross calves at weaning weights. The temperament of the Simmental breed is also proving to be a big positive of this cross with a natural quiet temperament being displayed throughout the progeny.

The Manning family have purchased bulls from the QSBS and its vendors and cannot recommend the sale highly enough, from the quality of the cattle through to the range of bulls on offer there is one to suit all budgets and operations. With all stud owners attending the sale it is great being able to discuss selected lots with the breeder themselves during the Sunday bull walk to gain a greater understanding of the cattle before purchase.



Rosemount Grazing  
"Rosemount"  
Barcardine QLD

# QUEENSLAND BEEF PRODUCERS MAKE THE QUEENSLAND SIMMENTAL BULL SALE EVEN BETTER FOR 2022

*We asked you, we listened and acted. Australia's largest Simmental Bull Sale improves even further for 2022.*

*Despite the 2021 Queensland Simmental Bull Sale being a great success with a 100% clearance rate (82 bulls sold) for a healthy average a number of changes have been made to this year's sale (25 July, CQLX Gracemere) based on commercial beef producer's feedback.*

## YOU TOLD US:

### **Morphology testing is preferred over Motility testing...**

Morphology testing is now mandatory for all bulls in the Queensland Simmental Bull Sale.

### **Out our way in Far Western Queensland our bulls need to be vaccinated for Vibrio...**

It is mandatory that bulls in this year's sale are vaccinated for Vibrio along with existing vaccinations.

### **Some bulls had bedding hay in their pens on the day of the bull walk - I don't like it...**

Most vendors are of the same opinion as it looks like you are trying to hide feet. The sale has provided strict instructions that no bedding hay is to be in pens with bulls on the day of the bull walk or sale day this year and for the future.

### **The photos of bulls in the catalogue under represented the quality of the bulls on sale day...**

The sale has reduced printing timeframes (using a different printer) by 7 days to allow photos to be taken 7 days later. Vendors have been asked to have the bulls slightly further prepared by the date of photography but under no circumstances to over-prepare bulls. Unfortunately, there's not much we can do about this.

### **Bulls weren't overfed and the sale wasn't a feeding contest - don't wreck a great sale by changing the formula...**

The same terms and conditions as related to weight and age apply this year. Vendors have been reminded that bulls exceeding weight limits will result in decreased nominations for their stud in the future.

### **I would have liked performance data on bulls...**

Most vendors already have performance data (EBVs) for their bulls. From 2023 the sale will communicate performance data for most lots in the sale with a preference for data on all bulls in the sale from that date forward.

### **There were some issues with some freight providers in the transport and delivery of bulls...**

The sale has improved processes around the sharing of freight and Gary Wendt (Ray White Gracemere) is the central point of contact for all things freight at this year's sale.

### **In the end 82 bulls made it to sale day in 2021 we would like more...**

It was a massive logistical effort to get bulls from as far as Western and South Australia to the sale. The last thing the sale wishes to do is to increase volume and reduce quality. The underlying principle of the sale is that the quality of bulls needs to improve every year.

Improvements in the supply chain have been made and vendors who exceeded the sale average in 2021 have been allocated additional bulls for the sale. The sale has also included an additional vendor- Woonallee Simmentals.

In 2022 the objective is to have a minimum of 100 lots present on sale day at CQLX Gracemere. (114 paid nominations from 14 vendors have been received)

### **What is Pp (big P little p) I haven't heard of it... - is it homozygous polled?**

Simmental Australia classifies polled (not homozygous polled) animals as Pp. It's obvious this has created confusion with the commercial beef sector in Queensland. From 2022 the following classifications as related to horned status will be used by the sale.

P	Polled
PP	Homozygous Polled
H	Horned
S	Scurred
Pp	Polled



**Want to Watch, Listen & Purchase online?  
Follow these easy steps:**

1. Visit [www.stocklive.com.au](http://www.stocklive.com.au)
2. Select 'Bid' icon and click 2022 QLD Simmental Bull Sale
3. Register you details including you PIC number and nominated selling agent (if applicable)
4. You're registered! When you're approved to BID, you will be notified via email
5. On sale day, log into your account and select 'Enter Auction'
6. You're ready to Start bidding!
7. Settle all purchases through your nominated agent or direct with vendor

**When you can't get to the auction, StockLive takes you there.**  
**1300 259 742**

## THANK YOU

*On the behalf of the vendors we would like to thank all buyers, underbidders and outside agents for their feedback on the 2021 sale and how to make it better for 2022. We can't have a successful sale without your input and support.*

# SIMMENTAL BULLS FOR SALE FROM QUEENSLAND & AROUND AUSTRALIA

The sale includes bulls born and raised right here in Queensland but also includes animals from high performing studs from other states. Knowing that commercial beef producers often travel Australia Wide to source new and different Simmental genetics (outside of those readily available in Queensland) the Queensland Simmental Bull Sale has brought those bulls right here to save time and travel costs. These vendors include some very well-known Simmental breeders including three of the longest established and one of the most highly regarded Simmental breeders in Australia. The sale also includes a number of significant commercial beef producers who have vertically integrated their operations to include their own Simmental Studs.

Over seventy percent of the studs involved in the sale were selected to participate on the basis that they have demonstrated performance by meeting or exceeding the industry sale averages and clearances rate for their bulls over a number of years. Twenty percent of stud vendors were selected as they run a significant scale beef production enterprise and have launched their own cattle stud and truly understand commercial beef production. The last ten percent have been selected to support new breeders in accessing an appropriate market and to keep the stud breeding sector competitive and continually improving.

## BULL PREPARATION & ACCLIMATISATION

A large number of the bulls presented in the sale are from vendors based in Queensland and this can be referenced in the participating studs section. These studs include multiple Queensland vendors (some located in heavy tick country) and a number of interstate vendors who have completed the last stages of bull preparation in Queensland.

Strict instructions on feeding programs and desired weight have been provided to all vendors to ensure bulls are not over prepared and are ready to work. Given the timing of the sale many bulls will be spelled prior to a controlled joining later in the season whilst others simply go straight to work. The timing and conditions of the sale have been selected to suit Queensland Commercial Cattle producers many of which have been buying Simmental Bulls from southern states for years.

# SALE TERMS & CONDITIONS

- ▶ Online bidding and viewing of lots will be available via Stock Live: [www.stocklive.com.au](http://www.stocklive.com.au)
- ▶ The Auction will be conducted under the Australian Livestock & Property Agents Association (ALPA) Livestock Auction Terms and Conditions Of Sale. These terms and conditions are displayed in the main front office of the CQLX selling complex. Compliance with sale terms and conditions is the responsibility of individual vendors.



To view these Terms and Conditions go to: <http://www.alpa.net.au/UserFiles/File/Documents/ALPA%20Livestock%20Terms%20and%20Conditions%20FEB%202017.pdf>

◀ or scan this QR Code

- ▶ Insurance Representatives will be in attendance on sale day and we recommend that buyers intending to insure their purchases do so from the fall of the hammer.

Nutrien Insurance is the preferred insurer for the sale and will be on site to arrange insurance for Bulls.

- ▶ **GUARANTEE:** All bulls come with a six month structure and fertility guarantee. In the case (supported by a Veterinarian Report) that a bull is found to be incapable of natural service or infertile, the selling stud vendor will replace the bull or provide a credit (less disposal proceeds) to the buyer for future purchases from the stud vendor. This condition is provided on the basis that the problem was not caused by injury or disease incurred post fall of the hammer at auction. The sale as a separate entity assumes no responsibility for individual bulls or vendors.

- ▶ **CATALOGUE DISCLAIMER:** All reasonable care has been taken by the vendors to ensure the information provided in the catalogue is correct. However the vendor and selling agents do not give any warranty as to errors or omissions. Prospective purchasers should satisfy themselves by inspection or otherwise as to the accuracy of the information provided.

## FREIGHT

There are numerous freight options available at the selling complex on sale day including a number of vendors delivering bulls themselves. In 2021 sales bulls travelled to all parts of Queensland with some also heading south.

Gary Wendt (Ray White Rural - Gracemere) will be co-ordinating freight on behalf of the sale and Gary can be contacted on 0427 184 875 or in the Ray White Office at CQLX on sale day.



**VENDOR PROFILE: Daraabah Fleckvieh Simmentals**



**Bruce and Melinda McColl**  
 0429 750 590  
 bruce@daraabah.com.au  
 7R Jones Creek Road  
 Dubbo NSW 2830

Daraabah Fleckvieh Simmental is a family operation running 120 breeders on properties at Dubbo and Merrygoen in Central West NSW. The stud was formed in 2011 after using Simmental and Fleckvieh cattle in our commercial herds since the mid 1980s. We found the South African genetics that came to Australia in the early 2000s matched our ideals. These genetics form the basis of the Daraabah herd.

Daraabah operates on a mantra of 'Our performance, your profit'. Our performance is based on integrity, effort, passion and progression. Your profit (gain, advantage, benefit) is our focus. In turn, that becomes our profit.

In the short period since 2011, we have strived to establish ourselves as producers of high quality, market suitable cattle. Our 2021 QSBS results and buyer feedback have been greatly encouraging and indicate that we are on the right track in producing the type of bulls that the market demands. Our bulls are successfully working in herds from Victoria, to Bourke, to Alpha, to Charters Towers and everywhere in-between.

**LOT 3 DARAABAH ROCKAFELLA R054 (H)**

**VENDOR: Daraabah**



**ID:**  
DBH3R054

**DOB:**  
16/03/2020

**S:** NEWLANDS FINNIGAN  
**SIRE:** DARAABAH KIKSUM K469  
**D:** WONDENIA FLUTE  
**S:** TENNYSONVALE MR WALLACE  
**DAM:** TENNYSONVALE GEORGIA G064  
**D:** BILANDA DESARAY D049

**COMMENTS**

A long bodied, well balanced, free moving bull who is sound all over with impressive muscle expression. Sired by our proven bull maker, Daraabah Kiksum. Purebred Fleckvieh. 7/8th ASBA

**BUYER:** ..... **PRICE \$** .....

**LOT 1 DARAABAH RUSTY R050 (H)**

**VENDOR: Daraabah**



**ID:**  
DBHPR050

**DOB:**  
26/02/2020

**S:** BRENAIR PARK GRAF  
**SIRE:** BRENAIR PARK LEMAIR L142  
**D:** BRENAIR PARK HANNAH C62  
**S:** NEWLANDS FINNIGAN  
**DAM:** DARAABAH JEMMA J304  
**D:** TENNYSONVALE EMMA

**COMMENTS**

Kicking off our sale draft with a 3/4 brother to last year's QSBS sale topper. He is a well adapted bull with well hooded eyes and a sleek coat type. Rusty is a free moving bull with plenty of sire appeal topped off with a quiet temperament.

**BUYER:** ..... **PRICE \$** .....

**LOT 4 DARAABAH RAMBO R062 (P) (AI)**

**VENDOR: Daraabah**



**ID:**  
DBHPR062

**DOB:**  
3/09/2020

**S:** GERMANICUS  
**SIRE:** GRANDIOSO  
**D:** 50  
**S:** GLEN ANTHONY Y-ARTA AY02  
**DAM:** GLENANNA POLLY P809  
**D:** DARAABAH HULA GIRL H202

**COMMENTS**

A well pigmented, polled, non-dilutor bull that packs a real punch. Out of a first calver but still topped the weaning weight ratio. Along with his SSS coat, outstanding temperament and interesting pedigree, he has real stud sire potential.

**BUYER:** ..... **PRICE \$** .....

**LOT 2 DARAABAH RESCHS R052 (H)**

**VENDOR: Daraabah**



**ID:**  
DBH3R052

**DOB:**  
13/03/2020

**S:** BRENAIR PARK GRAF  
**SIRE:** BRENAIR PARK LEMAIR L142  
**D:** BRENAIR PARK HANNAH C62  
**S:** TENNYSONVALE VIN  
**DAM:** DARAABAH WONDENIA GLORIA G641  
**D:** WONDENIA EXPRESSO

**COMMENTS**

A bull that has stood out from a young age for his eye appeal, balance and tremendous capacity. Sirey outlook with well hooded eyes. Reschs has the potential to add extra weight and length into his progeny. Purebred Fleckvieh. 7/8th ASBA

**BUYER:** ..... **PRICE \$** .....

**LOT 5 DARAABAH RINGMASTER R069 (P)**

**VENDOR: Daraabah**



**ID:**  
DBHPR069

**DOB:**  
19/09/2020

**S:** BRENAIR PARK GRAF  
**SIRE:** BRENAIR PARK LEMAIR L142  
**D:** BRENAIR PARK HANNAH C62  
**S:** DARAABAH JUMPING JACK FLASH J351  
**DAM:** DARAABAH MADONNA M602  
**D:** WONDENIA FLORENTINE F543

**COMMENTS**

A sirey, polled bull who has excellent depth and capacity. He has impressed us since birth with his thickness and sappyness. Well pigmented with quality coat and docile temperament.

**BUYER:** ..... **PRICE \$** .....

**LOT 6 DARAABAH RODERICK R075 (P)**

**VENDOR: Daraabah**



**ID:**  
DBHPR075

**DOB:**  
15/10/2020

**S:** BRENAIR PARK GRAF  
**SIRE: BRENAIR PARK LEMAIR L142**  
**D:** BRENAIR PARK HANNAH C62  
**S:** DARAABAH JUMPING JACK FLASH J351  
**DAM: DARAABAH MAGGIE MAY M610**  
**D:** DARAABAH WONDENIA GOLDYLOCKS G612

**COMMENTS**

Polled, non-dilutor bull with good length and a short, sleek and shiny coat. Roderick is a refined bull with a naturally docile temperament.

**BUYER:** ..... **PRICE \$** .....

**LOT 7 DARAABAH RECTIFY R068 (H) (TW)**

**VENDOR: Daraabah**



**ID:**  
DBHPR068

**DOB:**  
17/09/2020

**S:** BRENAIR PARK GRAF  
**SIRE: BRENAIR PARK LEMAIR L142**  
**D:** BRENAIR PARK HANNAH C62  
**S:** WONDENIA HOSEA H309  
**DAM: DARAABAH LOELLE L526**  
**D:** DARAABAH WONDENIA JOELLE J852

**COMMENTS**

A bull that strides around with plenty of style and class showing off his impressive length and balance. Out of one of our strongest maternal lines.

**BUYER:** ..... **PRICE \$** .....

**LOT 8 DARAABAH ROCKY R078 (P)**

**VENDOR: Daraabah**



**ID:**  
DBHPR078

**DOB:**  
24/10/2020

**S:** WOONALLEE JUMBO  
**SIRE: BARANA MADRID**  
**D:** BARANA EVETTA  
**S:** NEWLANDS FINNIGAN  
**DAM: GLENANNA NIPPY**  
**D:** GLENANNA HIANNA H204

**COMMENTS**

If you are looking to add weight for age to your herd then this is the bull for you! Rocky is a poll bull that oozes softness and sire appeal with impressive length and style, we believe he would be an asset to a range of breeding programs.

**BUYER:** ..... **PRICE \$** .....

**LOT 9 DARAABAH ROMEO R072 (H)**

**VENDOR: Daraabah**



**ID:**  
DBHPR072

**DOB:**  
25/09/2020

**S:** NEWLANDS FINNIGAN  
**SIRE: DARAABAH KIKSUM K469**  
**D:** WONDENIA FLUTE  
**S:** BRENAIR PARK LEMAIR L142  
**DAM: DARAABAH POSER P828**  
**D:** DARAABAH HENNA H201

**COMMENTS**

A sleek coated , non- dilutor bull with great muscle expression. Romeo's a very tidy young sire combining some of Daraabah's best breeding. He is out of a first calving heifer that was the top of her group.

**BUYER:** ..... **PRICE \$** .....

**LOT 10 DARAABAH RED ROOSTER (PP) (AI)**

**VENDOR: Daraabah**



**ID:**  
DBHPR079

**DOB:**  
29/10/2020

**S:** FGAF SELDOM 835L  
**SIRE: FGAF GUERRERO 810Y**  
**D:** NOSSATERRA REAL WISH 69U  
**S:** PHS POLLED WORLDWIDE 14W  
**DAM: GLENANNA MY GIRL M614**  
**D:** GLENANNA JENIVEVE

**COMMENTS**

R079 is a homozygous poll, cherry red bull who we believe packs a punch for just a 21 month old bull with impressive muscle expression and thickness from behind as well as a tidy underline and the added bonus of being dilution free, he'll be hard to go past!

**BUYER:** ..... **PRICE \$** .....

**LOT 11 DARAABAH RIPLEY R077 (P)**

**VENDOR: Daraabah**



**ID:**  
DBHPR077

**DOB:**  
17/10/2020

**S:** BRENAIR PARK GRAF  
**SIRE: BRENAIR PARK LEMAIR L142**  
**D:** BRENAIR PARK HANNAH C62  
**S:** DARAABAH KIKSUM K469  
**DAM: DARAABAH PIXIE P810**  
**D:** DARAABAH LINDI L506

**COMMENTS**

Another polled (scurred) bull out of a first calver that packs alot of punch. Excellent length and thickness in a moderate frame. Comes from a strong female line that has breed very well for us.

**BUYER:** ..... **PRICE \$** .....



**ID:**  
DBHPR073

**DOB:**  
25/09/2020

**COMMENTS**

Another sleek coated, non - dilutor sire with great depth and width. Ripper is well marked, moderate framed and is enviromentally adapted.

**S:** WOONALLEE JUMBO

**SIRE:** BARANA MADRID

**D:** BARANA EVETTA

**S:** NEWLANDS JAGGER J066

**DAM:** DARAABAH NEWLANDS GEZAMI M012

**D:** NEWLANDS GEZAMI E022

BUYER: ..... PRICE \$ .....



**FAST FACT**

Simmental is the second most numerous breed worldwide (following Bos Indicus)



# YERWAL ESTATE

Simmental and Angus Stud



**150 Simmental and Angus Bulls will be offered by Yerwal Estate at their annual on property sale, the Queensland Simmental Bull Sale and other selling outlets in 2023**



**Yerwal Estate Ripper**  
Sire BAR 5 SA Glover 854T



**Yerwal Estate Queenslander**  
Sire Glen Anthony Y-ARTA AY02



**Yerwal Estate Rockhampton (P)**  
Sire BAR 5 SA Glover 854T

**We pride ourselves in producing sound, commercially focused cattle that have the maturity and muscle patterns, doing ability to adapt and thrive in most parts of Australia.**

- In 2022 Yerwal Estate celebrates 20 years of selling bulls at their annual on property bull sale and 50 years of breeding Simmental in Australia.
- This years on property bull sale topped at \$17,500 in February with Yerwal Ripper sold to Appleton Cattle Company. Two full flush brothers to Yerwal Ripper are available in this years Queensland Simmental Bull Sale.
- Yerwal Estate is excited to announce it has imported Kerrah Dictator (P) semen from New Zealand. After an extensive world-wide search we have selected this impressive sire for his high calving ease/docility, positive fats and outcross genetics with the first calves due in 2023.
- Regan, Connie and family look forward to seeing you at the sale and be sure to say hi on Sunday 24th July at the bull walk prior to the sale on Monday

**For further information please contact Regan Burow**  
M 0419 817 669 T/F 08 8769 6168 E [regan@yerwalestate.com](mailto:regan@yerwalestate.com)



**VENDOR PROFILE: Yerwal Estate**



**Regan Burrow**  
 0419 817 669  
 regan@yerwalestate.com  
 Lawreys Road  
 NARACOORTE SA 5271

Yerwal Estate Simmental stud is a 600ha grazing property situated 45kms south west of Naracoorte in South Australia in 1963.

By the mid 80s Yerwal Estate was running 250 to 300 pure bred Simmental females and participating in an annual bull sale at Millicent. Yerwal saw great success in this sale, topping the average 4 out of 5 years. For a number of years Yerwal Estate has been selling bulls to many different parts of the country including the south-east of South Australia, Victoria, Central and Northern New South Wales, Northern South Australia, Northern Territory, Central Queensland and far Western Queensland. The stud has also sold embryos to central Queensland and has a good understanding of both the genetic and nutritional preparation requirements for cattle going into these climates.

Yerwal Estate aims to produce bulls that are sound, moderate framed, easy fleshing, athletic, soft and well pigmented. Yerwal Estate bulls are good footed, sound structured animals that will stand up on any soil type barring injury.

**LOT 15 YERWAL EST RECOIL (P)**

**VENDOR: Yerwal Estate**



**ID:**  
AMOPR047  
  
**DOB:**  
9/08/2020

**S:** WOONALLEE JUMBO  
**SIRE: BARANA NOTTINGHAM**  
**D:** BARANA GOSSIP GIRL  
**S:** WOONALLEE FETISH (SC)  
**DAM: YERWAL EST BAMBI J113**  
**D:** YERWAL EST BAMBI

**COMMENTS**

This bull is one of our standouts in the sale line up. Recoil has it all; oozing all the amounts of softness, muscle and easy doing ability he surely will catch your eye like he has ours. A true stud sire prospect that you will keep coming back to that is very hard to fault.

**BUYER:** ..... **PRICE \$** .....

**LOT 13 YERWAL EST RIP TIDE (P) (ET) (AI)**

**VENDOR: Yerwal Estate**



**ID:**  
AMOPR315  
  
**DOB:**  
30/03/2020

**S:** NAWINA GLOBAL P  
**SIRE: BAR 5 SA GLOVER 854T**  
**D:** JAHDAL IRENE  
**S:** WOONALLEE BHR TORNADO  
**DAM: MT MOONEY LACEY PRINCESS**  
**D:** YERWAL EST FUTURE PRINCESS

**COMMENTS**

Rip Tide is well muscled, balanced and good footed with stud sire appeal. A full brother to our on farm sale topper Ripper R311, sold to Appleton Cattle Company for \$17,500, Charter Towers, QLD. Hes had over 6mnths acclimatisation and comes jam packed with the most proven genetic make up.

**BUYER:** ..... **PRICE \$** .....

**LOT 16 YERWAL EST REMMINGTON (S)**

**VENDOR: Yerwal Estate**



**ID:**  
AMOPR168  
  
**DOB:**  
17/07/2020

**S:** WOONALLEE JUMBO  
**SIRE: BARANA NICKSON**  
**D:** BARANA GAYE  
**S:** WOONALLEE BHR TORNADO  
**DAM: YERWAL EST KATE**  
**D:** YERWAL EST GOLDIE

**COMMENTS**

Remmington has been well acclimatised as he has already spent 3 months of his life as a yearling working cows on heavy tick country and held up particularly well. He is a polled sound bull with great natural thickness and capacity.

**BUYER:** ..... **PRICE \$** .....

**LOT 14 YERWAL EST ROCKHAMPTON (P)**

**VENDOR: Yerwal Estate**



**ID:**  
AMOPR001  
  
**DOB:**  
1/04/2020

**S:** BARANA EMOTION  
**SIRE: BARANA LAZARETH**  
**D:** 2DIAMOND6 DAISY  
**S:** WOONALLEE HADAU  
**DAM: YERWAL EST GRACE**  
**D:** YERWAL EST CASSIE

**COMMENTS**

Rockhampton is a big deep barreled sire that is a true to type Lazareth son. He as had over 6mnths acclimatisation in QLD and a bull that would suit either stud or commercial herds. Hes long, he's thick and he is ready for the job. He will add value to any herd.

**BUYER:** ..... **PRICE \$** .....

**LOT 17 YERWAL EST RIP CURL (H) (ET) (AI)**

**VENDOR: Yerwal Estate**



**ID:**  
AMOPR309  
  
**DOB:**  
25/03/2020

**S:** NAWINA GLOBAL P  
**SIRE: BAR 5 SA GLOVER 854T**  
**D:** JAHDAL IRENE  
**S:** WOONALLEE BHR TORNADO  
**DAM: MT MOONEY LACEY PRINCESS**  
**D:** YERWAL EST FUTURE PRINCESS

**COMMENTS**

Ripcurl is a flush brother to Rip Tide R315 and Ripper R311. His background needs no introduction. His dam just never misses a beat. He as his siblings is jam packed with muscle, style and presence. Ripcurl is really square made and should add heaps of meat and punch to his progeny.

**BUYER:** ..... **PRICE \$** .....

**LOT 18 YERWAL EST RALPH (P)**

**VENDOR: Yerwal Estate**



**ID:**  
AMOPR017

**DOB:**  
8/07/2020

**S:** WOONALLEE JUMBO  
**SIRE: BARANA NOTTINGHAM**  
**D:** BARANA GOSSIP GIRL  
**S:** TENNYSONVALE LANE  
**DAM: YERWAL EST P086**  
**D:** YERWAL EST BAMBI J113

**COMMENTS**

A polled smooth made and soft bull, Ralph has the added fine coat attributes that will attract your eye. Structurally sound and good footed he will throw progeny to suit most commercial market specifications. A bull that should not be overlooked that has a lot of potential.

**BUYER:** ..... **PRICE \$** .....

**LOT 19 YERWAL EST ROAD HOUSE (H)**

**VENDOR: Yerwal Estate**



**ID:**  
AMOPR240

**DOB:**  
6/08/2020

**S:** WOONALLEE JUMBO  
**SIRE: BARANA NOTTINGHAM**  
**D:** BARANA GOSSIP GIRL  
**S:** WOONALLEE HADAU  
**DAM: YERWAL EST JESS**  
**D:** YERWAL EST BABY DOLL

**COMMENTS**

A very complete sire with his slick skin, fantastic musce pattern, ample bone and structural soundness to top it off. Road house has it all, a bull that is your one stop shop for all the right attributes to add weight and finish to your calves.

**BUYER:** ..... **PRICE \$** .....

**LOT 20 YERWAL EST ROMA (P)**

**VENDOR: Yerwal Estate**



**ID:**  
AMOPR035

**DOB:**  
12/07/2020

**S:** WOONALLEE LOS ANGELES  
**SIRE: YERWAL EST POWER PLAY**  
**D:** YERWAL EST KOMPLEAT  
**S:** TENNYSONVALE LANE  
**DAM: YERWAL EST PRINCESS P39**  
**D:** YERWAL EST H50

**COMMENTS**

Roma is a cherry red polled bull with all the right attributes. Hes jam packed with meat, soft doing ability, length and plenty of muscle a bull that surely ticks a lot of herds boxes.

**BUYER:** ..... **PRICE \$** .....

**LOT 21 YERWAL EST RADAR (P)**

**VENDOR: Yerwal Estate**



**ID:**  
AMOPR040

**DOB:**  
18/07/2020

**S:** WOONALLEE LOS ANGELES  
**SIRE: YERWAL EST POWER PLAY**  
**D:** YERWAL EST KOMPLEAT  
**S:** TENNYSONVALE LANE  
**DAM: YERWAL EST PRINCESS P40**  
**D:** YERWAL EST H50

**COMMENTS**

A bull not to take off your Radar. Bred very similar to the previous lot and true to type. If your looking for consistency then like in the name put it on your RADAR R040 and hit the trigger here to secure yourself a very complete bull that will hit all the commercial market specs.

**BUYER:** ..... **PRICE \$** .....

**LOT 22 YERWAL EST ROLLS ROYCE (H) (ET) (AI)**

**VENDOR: Yerwal Estate**



**ID:**  
AMOPR352

**DOB:**  
11/07/2020

**S:** KYKSO HADAU  
**SIRE: WOONALLEE HADAU**  
**D:** RU-DEV CASSY  
**S:** WOONALLEE A9  
**DAM: YERWAL EST DONATELLA**  
**D:** YERWAL EST APACHE QUEEN

**COMMENTS**

Rolls Royce is a large framed sire. He is structurally sound and has great temperament. His maturity pattern and bone make hin an ideal bull to grow out heavy steers.

**BUYER:** ..... **PRICE \$** .....

**LOT 23 YERWAL EST RAPSCALLION (P)**

**VENDOR: Yerwal Estate**



**ID:**  
AMOPR120

**DOB:**  
6/04/2020

**S:** BARANA EMOTION  
**SIRE: BARANA LAZARETH**  
**D:** 2DIAMOND6 DAISY  
**S:** WOONALLEE HADAU  
**DAM: YERWAL EST GEORGIE**  
**D:** YERWAL EST CASSIE

**COMMENTS**

Another typical Lazerth son and yet again similar to his siblings in type. Rapscallion will add the weight and muscle where it matters. A bull with a lot of potential and length that will add the right attributes to your calves.

**BUYER:** ..... **PRICE \$** .....

**LOT 24 YERWAL EST REBEL (S)**

**VENDOR: Yerwal Estate**



**ID:**  
AMOPRO25

**DOB:**  
9/07/2020

**S:** WOONALLEE JUMBO

**SIRE:** BARANA NICKSON

**D:** BARANA GAYE

**S:** YERWAL EST COPPERFIELD

**DAM:** YERWAL EST BABY DOLL G46

**D:** YERWAL EST BABY DOLL

**COMMENTS**

A loose skinned and slick coated bull. Rebel will give you a dose of hybrid vidgour to add the weight in your calves.

**BUYER:** ..... **PRICE \$** .....

**LOT 25 YERWAL EST ROCHESTER (P)**

**VENDOR: Yerwal Estate**



**ID:**  
AMOPRO42

**DOB:**  
5/10/2020

**S:** WOONALLEE LOS ANGELES

**SIRE:** YERWAL EST POWER PLAY

**D:** YERWAL EST KOMPLEAT

**S:** FSMB NEUMANN 8W

**DAM:** YERWAL EST J28

**D:** YERWAL EST FANTASIA

**COMMENTS**

Rochester is one of the younger bulls of our line up. Given the opportunity he will mature into a fantastic well balanced sire with a super slicked skin and plenty of muscle.

**BUYER:** ..... **PRICE \$** .....

**LOT 26 YERWAL ESTATE RUGER (P)**

**VENDOR: Yerwal Estate**



**ID:**  
ID incorrect

**DOB:**

**S:** WOONALLEE JUMBO

**SIRE:** BARANA NOTTINGHAM

**D:** BARANA GOSSIP GIRL

**S:** WOONALLEE EARTHQUAKE

**DAM:** YERWAL EST J134

**D:** YERWAL EST DONATELLA

**COMMENTS**

Ruger is the youngest of our line up and should not be overlooked. He has had no where near the preparation as the previous lots. Having been working for over 6mths in heavy tick country. A bull that will go onto a true sire and could well be the steal of the sale.

**BUYER:** ..... **PRICE \$** .....

**LOT 27 YERWAL EST STATE OF WAR R305 (PP) (ET) (AI) (B)**

**VENDOR: Yerwal Estate**



**ID:**  
AMOPR305

**DOB:**  
21/03/2020

**S:** WELSH'S WARSAW 312Z

**SIRE:** HART STATE OF WAR 056C

**D:** HART MISS 102A

**S:** MR NLC SUPERIOR S6018

**DAM:** YERWAL EST CHARO J59

**D:** LFE CHARO 604G

**COMMENTS**

He's homo black, stylish, well muscled and a stud sire prospect. State of War comes from the most proven genetics. His full brother was sold to Elite Cattle Co. and his brother's has already proven the strong sire power siring the C.A.F on the Sydney Grand Champion Female.

**BUYER:** ..... **PRICE \$** .....

**VENDOR PROFILE: Jarravale Simmentals**



**Allan Jarrett**  
0427 331 204

[jarravalepastoral@bigpond.com](mailto:jarravalepastoral@bigpond.com)  
45 Greenpigeon Road,  
Horseshoe Creek, Kyogle, NSW 2474

Run by fifth generation cattle producers, Jarravale Simmentals aspire to produce excellent quality Simmental genetics that will produce more beef for farming operations to enhance their profitability. Jarravale Simmentals is located near Kyogle on the Far North Coast of NSW with a breeding herd of over 100 registered females. During the past decade Jarravale Simmentals has seen increasing demand for quality bulls from both their local market and the wider Simmental community.

The Jarravale breeding program is focused on consistent, high-performing female lines that are fertile, structurally correct and wean heavy calves. Jarravale believes that the cow herd is the driver of performance in the beef industry. We select for industry relevant traits including: calving ease, carcass weight, fat coverage and performance on grass and grain. To achieve our goals we have and continue to heavily use embryo transfer and artificial insemination. To continue to improve our cow herd we source the best sires we can find globally that are backed by strong female lines and display the traits that our commercial clients require to put more money in their back pocket.

Our commitment to sourcing leading global genetics is demonstrated by travelling to visit leading Simmental cattle studs in North America and selecting embryos and semen from the lines that we believe will suit our Australian conditions.

**LOT 28 JARRAVAL RAPTOR R78 (PP) (ET) (AI)**

**VENDOR: Jarravale**



**ID:**  
JRVPR078

**DOB:**  
2/08/2020

**S:** VIRGINIA MAXIMUS

**SIRE:** ANCHOR D RAPTOR 392C

**D:** ANCHOR D ZILEY 392Z

**S:** PHS POLLED WORLDWIDE 14W

**DAM:** JARRAVAL LYDIA

**D:** GIBBONS SASHA

**COMMENTS**

Homozygous Poll. Stud Sire Potential! Embryo Transfer bull from one of leading donors. Part of our 2022 Show team. Youngest bull we are offering but he is the highest performing bull of his contemporary group. Great figures to back up his phenotype. 200 straws of semen collected for in herd use.

**BUYER:** ..... **PRICE \$** .....

**LOT 29 JARRVALE RONALDO R47 (H) (AI) VENDOR: Jarravale**



**ID:**  
JRVPRO47

**DOB:**  
25/04/2020

**S:** BAR 5 SA STIMULATION 415P  
**SIRE: JARRVALE NIAGARA**  
**D:** DOUBLE BAR D FLASHY 294U  
**S:** CHAMPS BRAVO  
**DAM: JARRVALE KATHIE N60**  
**D:** WOONALLEE KATHIE B111

**COMMENTS**

Performance bull from the Kathie cow family. Sirey look and moves exceptionally well. A great genetic package with his sire being an imported embryo from Canada. A stand out from birth.

BUYER: ..... PRICE \$ .....

**LOT 30 JARRVALE R08 (P) VENDOR: Jarravale**



**ID:**  
JRVPRO08

**DOB:**  
8/01/2020

**S:** WOONALLEE BHR TORNADO  
**SIRE: JARRVALE NOBLEMAN**  
**D:** JARRVALE HENRIETTA  
**S:** LRX HP ROCKET 23Y  
**DAM: LUCRANA NIKITA**  
**D:** LUCRANA FUNKY

**COMMENTS**

A Polled, larger framed bull that goes back to the Lucrana herd. Has Tornado in his pedigree which provides predictability for growth and maternal ability.

BUYER: ..... PRICE \$ .....

**LOT 31 JARRVALE ROMANOV R30 (P) (ET) (AI) VENDOR: Jarravale**



**ID:**  
JRVPRO30

**DOB:**  
25/02/2020

**S:** PUKETAWA NEW LEVEL AN151  
**SIRE: RISSINGTON NEW STANDARD AU158**  
**D:** RISSINGTON AN398  
**S:** STARWEST TOTAL VALUE  
**DAM: JARRVALE VASTI N63**  
**D:** WOONALLEE VASTI B117

**COMMENTS**

A polled embryo transfer bull from the Vasti cow family by the Rissington New Standard sire from NZ who we selected for his growth and performance on grass. Full brother to Lots 33 & 34.

BUYER: ..... PRICE \$ .....

**LOT 32 JARRVALE ROLLERCOASTER R33 (P) (AI) VENDOR: Jarravale**



**ID:**  
JRVPRO33

**DOB:**  
5/03/2020

**S:** TOPWEIGHT DIRECTOR  
**SIRE: WILLANDRA GOMEZ**  
**D:** WILLANDRA DIANA Z26  
**S:** BAR 5 P SA EXPERT 826M  
**DAM: JARRVALE KATE**  
**D:** BARANA GLADYS

**COMMENTS**

Another Polled bull from a Donor female that goes back to the Barana herd. Sired by Gomez who comes from the Willandra herd in WA. A great skin type and easy moving bull who will breed maternal daughters and heavy sons.

BUYER: ..... PRICE \$ .....

**LOT 33 JARRVALE ROMEO R21 (P) (ET) (AI) VENDOR: Jarravale**



**ID:**  
JRVPRO21

**DOB:**  
21/02/2020

**S:** PUKETAWA NEW LEVEL AN151  
**SIRE: RISSINGTON NEW STANDARD AU158**  
**D:** RISSINGTON AN398  
**S:** STARWEST TOTAL VALUE  
**DAM: JARRVALE VASTI N63**  
**D:** WOONALLEE VASTI B117

**COMMENTS**

A polled embryo transfer bull from the Vasti cow family by the Rissington New Standard sire from NZ who we selected for his growth and performance on grass. Full brother to Lots 31 & 34.

BUYER: ..... PRICE \$ .....

**LOT 34 JARRVALE REISLING R24 (P) (ET) (AI) VENDOR: Jarravale**



**ID:**  
JRVPRO24

**DOB:**  
22/02/2020

**S:** PUKETAWA NEW LEVEL AN151  
**SIRE: RISSINGTON NEW STANDARD AU158**  
**D:** RISSINGTON AN398  
**S:** STARWEST TOTAL VALUE  
**DAM: JARRVALE VASTI N63**  
**D:** WOONALLEE VASTI B117

**COMMENTS**

A polled embryo transfer bull from the Vasti cow family by the Rissington New Standard sire from NZ who we selected for his growth and performance on grass. Full brother to Lots 31 & 33.

BUYER: ..... PRICE \$ .....

**LOT 35 JARRVALE R26 (H) VENDOR: Jarravale**



**ID:** JRVPRO26  
**DOB:** 21/02/2020

**S:** CHAMPS BRAVO  
**SIRE: JARRVALE NAGASAKI**  
**D:** DDD POL EMOTION 902W  
**S:** JARRVALE GERONIMO  
**DAM: JARRVALE MYRTLE**  
**D:** JARRVALE HEIDI

**COMMENTS**  
 A slick coated sire by Nagasaki who was an imported Embryo from Canada who had a Full Brother sold in a stud herd. Will produce maternal daughters. Smaller birth weight and easier calving ease sire who could be used on heifers.

BUYER: ..... PRICE \$ .....

**LOT 36 JARRVALE RESILIENCE R39 (H) VENDOR: Jarravale**



**ID:** JRVPRO39  
**DOB:** 16/03/2020

**S:** LRX HP ROCKET 23Y  
**SIRE: JARRVALE NOTABULL**  
**D:** JARRVALE KRYSTAL  
**S:** JARRVALE GARETH  
**DAM: JARRVALE JENELLE**  
**D:** BARANA GLADYS

**COMMENTS**  
 A larger framed bull that will add performance to his progeny. From a really consistent cow family.

BUYER: ..... PRICE \$ .....

**LOT 37 JARRVALE NORMANDY (S) (ET) (AI) VENDOR: Jarravale**



**ID:** JRVPRO68  
**DOB:** 27/07/2020

**S:** BAR 5 SA GLOVER 854T  
**SIRE: JARRVALE NORMANDY**  
**D:** BHR SERENA SA 150N  
**S:** DDD SARGENT ROTE 211U  
**DAM: WOONALLEE ELENA H17**  
**D:** WOONALLEE ELENA F234

**COMMENTS**  
 Pedigree shows well known and highly desired international genetics. Visual inspection shows slick coat, full eye pigment and structural correctness. Jap ox and stud producers take note.

BUYER: ..... PRICE \$ .....

**VENDOR PROFILE: Tullayr Simmentals**



**George Wragge**  
 0410 014 754  
 tullayr@gmail.com  
 PO Box 281, Scone NSW 2337

Tullayr Simmentals is a family run Simmental Stud located just North of Scone in the Upper Hunter of NSW. As a family operation, George, his wife Georgia and parents Liz and Mike all contribute to the stud's success. Tullayr prides themselves on having honest cattle with outstanding temperaments suitable for a wide range of cattle markets.

Tullayr Simmentals consistently places bulls into local herds through paddock sales, whilst also selling successfully through multi-vendor bull sales into the Northern Rivers of NSW and Central Queensland cattle markets for close to a decade. Our inclusion in the Queensland Simmental bull sale further cements our commitment to the Queensland cattle market.

A commitment to sourcing leading genetics has led Tullayr to invest heavily in the cow herd through ET and AI programs and this has accelerated endeavours to deliver a product we are proud to stand behind. Our clients breeding objectives is at the forefront in our minds meaning an animal needs the ability to get about on a structurally sound set of feet and legs, be sleek coated and well pigmented, largely polled, moderately framed all with a quiet temperament. All calves are weighed at birth and along with continued objective measurements and strict physical selection. Buyers can be assured that Tullayr are presenting an animal that has had the guess work taken out if it.

**LOT 38 TULLAYR REDMAN (P) VENDOR: Tullayr**

**ID:** ZGWPR205  
**DOB:** 26/04/2020

**S:** LANCASTER E-TYPE E074  
**SIRE: SAVANNAH JON BON JOVI**  
**D:** CORINDADOWNS DHARMA  
**S:** ULMARRA GARTH  
**DAM: TULLAYR MOLLY**  
**D:** TULLAYR JESINTA

**COMMENTS**  
 A powerful, moderately framed bull who exhibits a huge amount of shape along the top, right through the rear end and hind quarter. Redman has an outstanding temperament and coat type. Sound feet and legs, a really well suited bull to the Queensland market.

BUYER: ..... PRICE \$ .....

**LOT 39 TULLAYR RIDDLER (H) (AI) VENDOR: Tullayr**



**ID:** ZGWPR921  
**DOB:** 25/10/2020

**S:** WAI-ITI HIGH RISER  
**SIRE: GLEN ANTHONY Y-ARTA AY02**  
**D:** WILLOWBROOK URSULINA AU18  
**S:** SIBELLE DIRTY HARRY 25Z  
**DAM: WOONALLEE ROSY N131**  
**D:** WOONALLEE ROSY J56

**COMMENTS**  
 A young moderately framed bull that has always stood out from his contemporary's. A really modest birthweight bull that has really developed and expresses all the carcass attributes the breed is renowned for. Well pigmented with a true sires outlook.

BUYER: ..... PRICE \$ .....

**FAST FACT**  
 Australian Simmental, genetically selected for over 50 years to improve calving performance and adaptability to Australian Conditions.

**LOT 40 TULLAYR ROCKY (P) VENDOR: Tullayr**



**ID:** ZGWPR615  
**DOB:** 24/08/2020  
**S:** LANCASTER E-TYPE E074  
**SIRE:** SAVANNAH JON BON JOVI  
**D:** CORINDADOWNS DHARMA  
**S:** ULMARRA GARTH  
**DAM:** TULLAYR MARIGOLD  
**D:** TULLAYR HEIDI

**COMMENTS**  
 Rocky combines just about all we look to put together in a bull, docility, pigmentation, polled, easy fleshing, good coat type, modest birthweight onto a structurally sound frame. He is a moderate framed bull that has a real future ahead of him.

**BUYER:** ..... **PRICE \$** .....

**LOT 41 TULLAYR RELIABULL (P) VENDOR: Tullayr**

**ID:** ZGWPR509  
**DOB:** 27/07/2020  
**S:** LANCASTER E-TYPE E074  
**SIRE:** SAVANNAH JON BON JOVI  
**D:** CORINDADOWNS DHARMA  
**S:** ULMARRA GARTH  
**DAM:** TULLAYR M1222  
**D:** WONDENIA YUNESCO

**COMMENTS**  
 Reliabull by name reliable by nature, this bull is out of one of our most consistent producing cow lines. A moderate bull with plenty of carcass about him. Set on a really sound set of feet and legs, his mobility will get him around the paddock.

**BUYER:** ..... **PRICE \$** .....

**LOT 42 TULLAYR REPUTABULL (P) VENDOR: Tullayr**



**ID:** ZGWPR613  
**DOB:** 15/07/2020  
**S:** LANCASTER E-TYPE E074  
**SIRE:** SAVANNAH JON BON JOVI  
**D:** CORINDADOWNS DHARMA  
**S:** ULMARRA GARTH  
**DAM:** TULLAYR LIZZIE  
**D:** WONDENIA YUNESCO

**COMMENTS**  
 Out of one of our more powerful cow lines, Reputabull combines his carcass traits with a softness and ability to lay down the cover. Structurally correct with a good set of testes and clean sheath, Reputabull is an honest, no fuss bull.

**BUYER:** ..... **PRICE \$** .....

**FAST FACT**  
 In the middle ages Simmental was used a dual-purpose breed for Beef, Dairy and as a Draught Animal

**LOT 43 TULLAYR REALDEAL (P) VENDOR: Tullayr**

**ID:** ZGWPR307  
**DOB:** 25/06/2020  
**S:** LANCASTER E-TYPE E074  
**SIRE:** SAVANNAH JON BON JOVI  
**D:** CORINDADOWNS DHARMA  
**S:** BARANA LANCELOT  
**DAM:** TULLAYR PIXIE  
**D:** TULLAYR LIZZIE

**COMMENTS**  
 Real deal is a bull that has some real stretch about him and meat in all the valuable places, just like his sire. His coat type and pigmentation will see him thrive in the Queensland environment. A temperament that is a pleasure to work with, he will be an asset to any operation.

**BUYER:** ..... **PRICE \$** .....

**VENDOR PROFILE: Woonallee Simmentals**



**Tom Baker**  
 0428 475 066  
 Millicent, South Australia  
[www.woonalleesimmentals.com](http://www.woonalleesimmentals.com)

Woonallee Simmentals is a family run operation in the Southeast of South Australia. The Baker family have been breeding Simmentals for 50 years and now sell over 250 bulls annually throughout Australia. Our herd consists of over 800 registered breeding females featuring Traditional, Black and Red Simmentals and SimAngus females.

Our search for new genetics has expanded throughout the world with the very best sourced and integrated through our herd. These genetics, combined with the very best we can find in Australia have helped grow and expand our herd with the increased numbers allowing for a stricter selection criteria.

Our bulls are run in large contemporary groups allowing only the very best to make it to sale. Only the top performing bulls from each group make up our sale draft whether that be for our on-property sale in February, the QSBS in July at Rockhampton or our Tamworth Sale in August. With both an Autumn and Spring calving herd, we can always guarantee the best we have at whatever sale we sell at. All bulls sold are stringently assessed for structure, temperament and fertility and are genomically tested for parent verification, polledness & colour and tested pestivirus free.

**LOT 44 WOONALLEE RUSTY R117 (PP) (AI) (R) VENDOR: Woonallee**



**ID:** WEEPR117  
**DOB:** 10/04/2020  
**S:** CDI AUTHORITY 77X  
**SIRE:** KWA LAW MAKER 59C  
**D:** KWA MS ROCK 14X  
**S:** TUGULAWA KING  
**DAM:** WOONALLEE SPICY M393  
**D:** WOONALLEE SPICY H112

**COMMENTS**  
 The first KWA Lawmaker to sell in Australia and Rusty is an impressive individual with huge performance, depth and capacity. The highest performing red bull on offer, he is ideally suited to a high-end stud or commercial operation. Rusty is in the top 10% for 200 & 400-day weight and EMA. Homozygous Polled.

**BUYER:** ..... **PRICE \$** .....

**LOT 45 WOONALLEE RAVIOLI R311 (P) (R)      VENDOR: Woonallee**



**ID:**  
WEEPR311

**DOB:**  
30/04/2020

**S:** WOONALLEE HORIZON H211  
**SIRE: WOONALLEE MESSIAH**  
**D:** WOONALLEE CHARO J252  
**S:** WOONALLEE JUMBUCK  
**DAM: WOONALLEE POLLY M129**  
**D:** WOONALLEE POLLY H243

**COMMENTS**

A deep sided Messiah son from a high performing female line, Ravioli's skin and hair type make him a great option for the North. A strong carcass bull with extra fat coverage, soundness and mobility with longevity built into his pedigree. Polled

**BUYER:** ..... **PRICE \$** .....

**LOT 46 WOONALLEE REDBACK R23 (PP) (AI) (R)      VENDOR: Woonallee**



**ID:**  
WEEPR023

**DOB:**  
22/03/2020

**S:** CDI AUTHORITY 77X  
**SIRE: KWA LAW MAKER 59C**  
**D:** KWA MS ROCK 14X  
**S:** WOONALLEE HARRY  
**DAM: WOONALLEE SHEILA N321**  
**D:** WOONALLEE SHEILA L442

**COMMENTS**

Another KWA Lawmaker with a slick dark red skin type. Redback is a long-bodied bull with great thickness and capacity and is sure to add plenty of extra kg's to his progeny. Top 20% for Rib & rump fat and IMF. Homozygous Polled.

**BUYER:** ..... **PRICE \$** .....

**LOT 47 WOONALLEE REGAL R560 (P) (ET) (AI) (R)      VENDOR: Woonallee**



**ID:**  
WEEPR560

**DOB:**  
11/09/2020

**S:** CDI AUTHORITY 77X  
**SIRE: KWA LAW MAKER 59C**  
**D:** KWA MS ROCK 14X  
**S:** CORINDADOWNS DELIVER  
**DAM: WOONALLEE BEE-KAHA H259**  
**D:** WOONALLEE BEE-KAHA D107

**COMMENTS**

Regal is a September born IVF KWA Lawmaker son out of one of our very best red cows H259. Tremendous length and thickness with the look of a sire, he is sure to impress. Extremely sound with mobility and style, he will be at the top of the list for many. Top 5% for EMA. Polled

**BUYER:** ..... **PRICE \$** .....

**LOT 48 WOONALLEE REFINE R570 (PP) (ET) (AI)      VENDOR: Woonallee**



**ID:**  
WEEPR570

**DOB:**  
14/09/2020

**S:** PROFIT  
**SIRE: BAILEY'S ONE OF A KIND**  
**D:** BAILEY'S MS DREAMY 946W  
**S:** LFE RED CASINO 3036X  
**DAM: MRL MISS SMARTY PANTS III**  
**D:** TRIPILE C SMARTY PANTS R

**COMMENTS**

Refine is an imported embryo and the first Bailey's One of A Kind to sell in Australia and out of the elite Canadian donor MRL Miss Smarty Pants 111. Again a September drop with incredible depth and great muscling, he combines a superior carcass with above average fat cover. Homozygous Polled

**BUYER:** ..... **PRICE \$** .....

**LOT 49 WOONALLEE REPERTOIRE R406 (PP) (B)      VENDOR: Woonallee**



**ID:**  
WEEPR406

**DOB:**  
18/05/2020

**S:** WEBB TANK K090  
**SIRE: NARACOOPA NEUMANN**  
**D:** WOONALLEE OLIVIA K166  
**S:** LANCASTER HIGH PROFILE H338  
**DAM: WOONALLEE N114**  
**D:** WEBB K206

**COMMENTS**

A high-quality herd sire with huge performance, style and muscling. If you are looking for a top end black Simmental then this is your bull. A bull with great skin and hair type that moves like a cat, Repertoire has the look of a true herd sire. Homozygous Polled & Homozygous Black.

**BUYER:** ..... **PRICE \$** .....

**LOT 50 WOONALLEE RASTUS R169 (PP) (B)      VENDOR: Woonallee**



**ID:**  
WEEPR169

**DOB:**  
13/04/2020

**S:** WEBB TANK K090  
**SIRE: NARACOOPA NEUMANN**  
**D:** WOONALLEE OLIVIA K166  
**S:** 3D BLK FULL THROTTLE 483X  
**DAM: WOONALLEE SHEILA N765**  
**D:** LFE BS SHEILA 621Y

**COMMENTS**

Rastus is hands down the highest performing bull of this draft and possibly the whole of our R drop bulls. Massive performance combined with huge body capacity and thickness, he will appeal to those looking to add weight gain to their herd. Has white on his underline. Homozygous Polled & Homozygous Black

**BUYER:** ..... **PRICE \$** .....

LOT 51 WOONALLEE RANCH R154 (PP) (B)

VENDOR: Woonallee



ID: WEEOR154

DOB: 13/04/2020

S: WEBB TANK K090  
SIRE: NARACOOPA NEUMANN  
D: WOONALLEE OLIVIA K166  
S: XSIM BETTIS J2053A  
DAM: XSIM M LKY CHARM M2044D  
D: XSIM MISS CHARM K2015B

COMMENTS

A well made Neumann son with good length, thickness, and muscling. A versatile bull with a strong maternal pedigree, Ranch has the skin and mobility to suit the North. Top 10% for birth weight and top 15% for IMF. Homozygous Polled & Homozygous Black

BUYER: ..... PRICE \$ .....

LOT 52 WOONALLEE REFEREE R334 (PP) (B)

VENDOR: Woonallee



ID: WEEPR334

DOB: 2/05/2020

S: CCR COWBOY CUT 5048Z  
SIRE: LANCASTER NATURAL  
D: LANCASTER ERICA J121  
S: WOONALLEE JACK  
DAM: WOONALLEE OLIVIA N351  
D: WOONALLEE OLIVIA L364

COMMENTS

Referee is a quality Natural N301 son with excellent length and thickness in a super sound package. An efficient and well-made bull with awesome data that puts him in the top 10% for gestation length, birth, rib & rump fat and IMF. Homozygous Polled & Homozygous Black

BUYER: ..... PRICE \$ .....

LOT 53 WOONALLEE ROVER R371 (PP) (B)

VENDOR: Woonallee



ID: WEE2R371

DOB: 8/05/2020

S: LFE BISS BLACK ADVANCE 426U  
SIRE: WOONALLEE NORWOOD  
D: LFE KIRBIE 217N  
S: WOONALLEE HUMDINGER  
DAM: WOONALLEE CLEO P229  
D: BLACK ANGUS CLEO K69 (TW)

COMMENTS

Rover is a slick coated bull with great length, depth, and muscling. Free moving with good softness and style by the great Norwood N758 bull who has bred so well. A bull that will add extra fat and IMF while maintaining performance and power. Homozygous Polled & Homozygous Black

BUYER: ..... PRICE \$ .....

## ADD PROFITABILITY TO ANY BREEDING HERD

SIMMENTAL | SIMANGUS | SUPERBLACK

SELLING AT 3 LOCATIONS EVERY YEAR:

BRIDGETOWN (WA) ROCKHAMPTON (QLD) ROMA (QLD)



“ We topped the sale with our steers and the buyer tracked me down to ask what their breeding was as he loved their depth and bone. - 2019 Buyer

INTEGRITY - INNOVATION - INVESTMENT

Bonnydale WA: Mike Introvigne 0428 644 012 Bonnydale QLD: Jake Berghofer 0418 649 666

bonnydalesimmentals.com



**VENDOR PROFILE: Bonnydale Qld Black Simmentals**



Jake Berghofer and Emma Patterson  
0418 649 666  
qld@bonnydalesimmentals.com  
"Barambah Dale" Moffatdale QLD 4605

Bonnydale Black Simmentals is a family business built on hard work, patience and dedication coupled with an unwavering and passionate commitment to clients and the Australian beef industry. Our number one goal is to improve the profitability and sustainability of our customers businesses. We believe if we can achieve that through profit focused genetics and superior service, our customers will continue to support the Bonnydale program.

Bonnydale has a large pool of genetics working in varied climatic conditions – over 1000 registered and 1200 commercial females between our 2 herds in WA & QLD provides high selection pressure. This means that the 250 Bonnydale Bulls selected for sale each year are of extremely high quality. They combine excellent structure, softness with muscling, calving ease, do-ability with excellent temperament and superior genetic merit and predictability.

Each bull is offered for sale with parent verified pedigrees, genomic enhanced EPD's, free from genetic faults and comes with Bonnydale's unsurpassed after sales service guarantee. We DNA test every calf to deliver pedigree integrity and provide buyers with confidence in their selections.

The value offered by Bonnydale genetics continues to be endorsed by our satisfied clients.

Whether it be advising us of the terrific weight gain of their calves, excellent conception rates of their herd or the tremendous comments they receive from buyers. These endorsements motivate us to continue our pursuit of excellence in the product we deliver.

**LOT 54 BONNYDALE Q JUSTICE R64 (P) (B) VENDOR: Bonnydale**



**ID:** BQDPR064  
**DOB:** 7/08/2020  
**S:** BBS TRUE JUSTICE B10  
**SIRE:** BONNYDALE TRUE JUSTICE P106  
**D:** ASR MS CAMILLE W967  
**S:** LRS UNLIMITED 752A  
**DAM:** BONNYDALE QLD GEORGIA P005  
**D:** BONNYDALE GEORGIA J128

**COMMENTS**  
Big capacity and depth with solid weight EBVs to start the Bonnydale run. Functional and uniform, R64 is a heifers first calf with good EBVs for calving ease. Soft and easy doing plus homozygous black.

**BUYER:** ..... **PRICE \$** .....

**LOT 55 BONNYDALE Q JUSTICE R86 (PP) (B) VENDOR: Bonnydale**



**ID:** BQDPR086  
**DOB:** 13/08/2020  
**S:** BBS TRUE JUSTICE B10  
**SIRE:** BONNYDALE TRUE JUSTICE P106  
**D:** ASR MS CAMILLE W967  
**S:** KAPPES UNIQUE P27  
**DAM:** BONNYDALE QLD GATEWAY P013  
**D:** BONNYDALE GATEWAY M109

**COMMENTS**  
The scale buster of the True Justice sons. Leads his group with weight attributes and presents a total package of length, depth and solid to the ground. One not to miss with his great profile and solid data. Homozygous black

**BUYER:** ..... **PRICE \$** .....

**LOT 56 BONNYDALE Q AUSTIN R93 (P) (B) VENDOR: Bonnydale**



**ID:** BQDPR093  
**DOB:** 22/10/2020  
**S:** RCR AUGUSTUS R54  
**SIRE:** BONNYDALE QLD AUSTIN P6  
**D:** BONNYDALE CARLENE K185  
**S:** BONNYDALE BLACK HAWK H274  
**DAM:** BONNYDALE JOSIE N144  
**D:** BONNYDALE JOSSIE G210

**COMMENTS**  
A classy Augustus son with good frame and carcase attributes. Homozygous black and from a solid performance cow.

**BUYER:** ..... **PRICE \$** .....

**LOT 57 BONNYDALE Q JUSTICE R88 (P) (B) VENDOR: Bonnydale**



**ID:** BQDPR088  
**DOB:** 21/08/2020  
**S:** BBS TRUE JUSTICE B10  
**SIRE:** BONNYDALE TRUE JUSTICE P106  
**D:** ASR MS CAMILLE W967  
**S:** BONNYDALE SA RANCH HAND M342  
**DAM:** BONNYDALE QLD DESSY P024  
**D:** BONNYDALE DESSY M80

**COMMENTS**  
Another powerful Justice son and heifers first calf. Good length and balance in a homozygous black package from a strong maternal line

**BUYER:** ..... **PRICE \$** .....

**LOT 58 BONNYDALE Q JUSTICE R76 (P) (B) VENDOR: Bonnydale**



**ID:** BQDPR076  
**DOB:** 11/09/2020  
**S:** BBS TRUE JUSTICE B10  
**SIRE:** BONNYDALE TRUE JUSTICE P106  
**D:** ASR MS CAMILLE W967  
**S:** LRS UNLIMITED 752A  
**DAM:** BONNYDALE QLD GEORGIA P50  
**D:** BONNYDALE GEORGIA J128

**COMMENTS**  
A good heifer option in this bull showing good thickness and carcase value. Stylish, docile and homozygous black

**BUYER:** ..... **PRICE \$** .....

**LOT 59 BONNYDALE Q AUSTIN R72 (PP) (B)      VENDOR: Bonnydale**



**ID:**  
BQDPR072

**DOB:**  
22/10/2020

**S:** RCR AUGUSTUS R54  
**SIRE: BONNYDALE QLD AUSTIN P6**  
**D:** BONNYDALE CARLENE K185  
**S:** BONNYDALE JIM BEAM  
**DAM: BONNYDALE GATEWAY M109**  
**D:** BONNYDALE GATEWAY

**COMMENTS**  
 Moderate and thick young bull with solid EPDs for growth. Easy to handle, homozygous black and predictable genetics make this bull a solid option.

**BUYER:** ..... **PRICE \$** .....

**LOT 60 BONNYDALE Q AUSTIN R81 (PP) (B)      VENDOR: Bonnydale**

**ID:**  
BQDPR081

**DOB:**  
26/10/2020

**S:** RCR AUGUSTUS R54  
**SIRE: BONNYDALE QLD AUSTIN P6**  
**D:** BONNYDALE CARLENE K185  
**S:** BONNYDALE JIM BEAM  
**DAM: BONNYDALE GEORGIA M92**  
**D:** BONNYDALE GEORGIA G249

**COMMENTS**  
 The youngest of the R bulls in the draft. Moderate framed with good carcase performance data. Homozygous black and strong on the maternal line with the Georgia pedigree

**BUYER:** ..... **PRICE \$** .....

**LOT 61 BONNYDALE Q JUSTICE R68 (P) (B)      VENDOR: Bonnydale**

**ID:**  
BQDPR068

**DOB:**  
10/09/2020

**S:** BBS TRUE JUSTICE B10  
**SIRE: BONNYDALE TRUE JUSTICE P106**  
**D:** ASR MS CAMILLE W967  
**S:** LRS UNLIMITED 752A  
**DAM: BONNYDALE QLD GEORGIA P53**  
**D:** BONNYDALE GEORGIA J128

**COMMENTS**  
 A solid pedigree with good calving ease out of a first calf heifer. A good carcase bull in a sound package and homozygous black

**BUYER:** ..... **PRICE \$** .....



**LOT 62 BONNYDALE QUAKER S205 (PP) (B)      VENDOR: Bonnydale**

**ID:**  
MBBPS205

**DOB:**  
4/03/2021

**S:** OVAL F ALL TIME A322  
**SIRE: BONNYDALE QUAKER**  
**D:** ASR BLACK MIRANDA Y198  
**S:** HSF HIGH ROLLER 12T  
**DAM: BONNYDALE FINE ART P44**  
**D:** ASR FINE ART A3205

**COMMENTS**  
 The youngest bull in the Bonnydale draft and a serious contender with good frame and phenotype. Ranks in the top 5% for 200 day weight and solid across the board for growth traits. Homozygous black

**BUYER:** ..... **PRICE \$** .....

**LOT 63 BONNYDALE BROAD RANGE S018 (PP) (AI) (B)      VENDOR: Bonnydale**



**ID:**  
MBBPS018

**DOB:**  
8/01/2021

**S:** CCR WIDE RANGE 9005A  
**SIRE: GIBBS 7382 BROAD RANGE**  
**D:** SSF BLK LOUISE Y534  
**S:** BONNYDALE KRUISER  
**DAM: BONNYDALE LIL DESSI Q75**  
**D:** BONNYDALE LIL DESSI L02

**COMMENTS**  
 An ideal bull for your heifer program with calving ease and birthweight EBVs in the top 10%. Good length and carcase in this hetero black bull.

**BUYER:** ..... **PRICE \$** .....

**LOT 64 BONNYDALE NEVADA S74 (PP) (B)      VENDOR: Bonnydale**



**ID:**  
MBBPS074

**DOB:**  
18/01/2021

**S:** RCR AUGUSTUS R54  
**SIRE: BONNYDALE NEVADA N160**  
**D:** BONNYDALE JOSSIE G204  
**S:** TNT TANKER U263  
**DAM: BONNYDALE JOSSIE K103**  
**D:** BONNYDALE JOSSIE G223

**COMMENTS**  
 A good bull if you're chasing carcase weight with top 5% EPDs and a solid frame to hang it off. Augustus and Tanker in the pedigree make him a predictabe choice. Homozygous black.

**BUYER:** ..... **PRICE \$** .....

**LOT 65 BONNYDALE NEVADA S143 (PP) (B)      **VENDOR: Bonnydale****

**ID:** MBBPS143  
**S:** RCR AUGUSTUS R54  
**SIRE: BONNYDALE NEVADA N160**  
**D:** BONNYDALE JOSSIE G204  
**DOB:** 4/02/2021  
**S:** BONNYDALE RANCH HAND K101  
**DAM: BONNYDALE GALAXY M47**  
**D:** BONNYDALE GALAXY K122

**COMMENTS**  
 A maternally strong Nevada son. Another younger bull with good thickness and muscling. Homozygous black.

**BUYER:** ..... **PRICE \$** .....

**LOT 66 BONNYDALE Q ROOSEVELT S26 (P) (AI) (B)      **VENDOR: Bonnydale****



**ID:** BQDPS026  
**S:** CCR COWBOY CUT 5048Z  
**SIRE: TJ ROOSEVELT 366E**  
**D:** TJ 99A  
**DOB:** 11/01/2021  
**S:** TNT TANKER U263  
**DAM: BONNYDALE GRENADA N32**  
**D:** BONNYDALE GRENADA

**COMMENTS**  
 The first of the Roosevelt sons to be offered in QLD and he hits the mark for depth, softness and muscle. A loaded pedigree with good phenotype - definitely one to watch. Homozygous black.

**BUYER:** ..... **PRICE \$** .....

**LOT 67 BONNYDALE Q TRUE JUSTICE S22 (PP) (AI) (B)      **VENDOR: Bonnydale****



**ID:** BQDPS022  
**S:** BDV TRUE GRIT 11X  
**SIRE: BBS TRUE JUSTICE B10**  
**D:** BBS MISS JUSTICE Z7  
**DOB:** 14/01/2021  
**S:** BONNYDALE LOAD TRACK  
**DAM: BONNYDALE GRENADA N137**  
**D:** BONNYDALE GRENADA K165

**COMMENTS**  
 A good performance bull rounds out the Bonnydale draft. Don't miss this guy to add muscle and softness into your herd. Homozygous black.

**BUYER:** ..... **PRICE \$** .....

**FAST FACT**  
 The Australian, South African, South American, American and Canadian Simmental has been genetically selected for Beef Production.

**VENDOR PROFILE: Lone Station Simmental Stud**



**Steven Manwill**  
 0416 229 171  
 smanwill@pharosinvestments.com.au  
 1154 Kipper Creek Road  
 Biarra, QLD 4313

Lone Station Simmental Bulls are known for a clean coat type, consistency in growth, structural correctness, sound feet and being bred in heavy tick coastal country. Lone Station Simmental females have been carefully selected for calving ease, fertility, growth rate of progeny, clean coat type and eye colouring/pigmentation

Lone Station Simmental Bulls are working today in commercial herds all across Queensland at locations including Banana, Marlborough, Moura, Sarina, Nebo, Theodore, Charters Towers, Clermont, Alpha and more.

Lone Station Simmental Stud has sold stud sires and females to numerous Queensland based Simmental Stud operations (including two of the oldest established). Lone Station Bulls are also often sort after for commercial cattle operations in heavy tick and lantana country.

2021 and 2020 saw Lone Station Simmentals unable to supply enough bulls to meet demand from existing and new clients.

**LOT 68 LONE STATION ROCK VEGAS (P)      **VENDOR: Lone Station****

**ID:** LSNPR124  
**S:** CLAY GULLY JAYKO  
**SIRE: LONE STATION NO LIMIT**  
**D:** LUCRANA LACEY  
**DOB:** 19/12/2020  
**S:** NOANGA CARLTON  
**DAM: LONE STATION KEELEY**  
**D:** LONE STATION HEIDI H009

**COMMENTS**  
 Rock Vegas is the first Calf available from our genetic plan signed off back in 2019. This animal is a deliberate attempt to retain Lone Stations desire for plenty of length and depth without losing capacity through the flank with added gains in the hindquarters which is difficult to achieve.

**BUYER:** ..... **PRICE \$** .....

**LOT 69 LONE STATION RIGHT TIME (P)      **VENDOR: Lone Station****

**ID:** LSNPR120  
**S:** CLAY GULLY JAYKO  
**SIRE: LONE STATION NO LIMIT**  
**D:** LUCRANA LACEY  
**DOB:** 26/11/2020  
**S:** FINALEE MOJO  
**DAM: LONE STATION PAMELA**  
**D:** LONE STATION KALA

**COMMENTS**  
 Plenty of length in the carcass, strong backline and ample bone. Colouring and coat are the type that works well for Lone Station in heavy tick country in South East Queensland.

**BUYER:** ..... **PRICE \$** .....

**LOT 70 LONE STATION RIMFIRE (H)      **VENDOR: Lone Station****

**ID:** LSNPR122  
**S:** CLAY GULLY JAYKO  
**SIRE: LONE STATION NON LETHAL**  
**D:** LONE STATION LAYLA  
**DOB:** 6/12/2020  
**S:** NOANGA CARLTON  
**DAM: LONE STATION KATHRYN**  
**D:** CLAY GULLY EMOTION

**COMMENTS**  
 The resilience in this bull has amazed us as mother died of poisoning when Rimfire was 4 months. Pedigree and associated data shows genetic line high percentiles for consistent and even growth including two stud sires sold into QLD Simmental Stud based operations

**BUYER:** ..... **PRICE \$** .....

**VENDOR PROFILE: Summa Simmentals**



Jack and Tara  
0400 718 481  
dumma10@bigpond.com  
"Emoh Ruo" May Downs - Carfax  
Road Middlemount QLD 4746

Jack and Tara Dumma ('Emoh Ruo', Middlemount) own and operate a mixed farming operation in Central Queensland which includes breeding, backgrounding and fattening the progeny of a 2,000 head commercial Brahman based female herd.

After many crossbreeding trials to improve the profitability of their beef operation the switch was made to using Simmental Bulls. Since that time, it has been the crossbreed of choice in their operation over Brahman females. It was also the start of a love and appreciation of the Simmental Breed and led to starting Summa Simmentals.

**LOT 73 SUMMA ROCKET R61 (P) VENDOR: Summa**



**ID:**  
JTDPRO61

**DOB:**  
2/12/2020

**S:** WOONALLEE JUSTIFIED J112  
**SIRE: BLUE DOG MANSFIELD**  
**D:** BOOLAROO VERONICA  
**S:** LRX HP ROCKET 23Y  
**DAM: LUCRANA NERISSA N040**  
**D:** LUCRANA DULCE

**COMMENTS**

Rocket's dam Lucrana Nerissa is doing a fantastic job in our herd. She has a great amount of depth and length which she is passing onto her progeny. Rocket has a super sleek, cherry red coat, and with his added length he has consistently shown good weight gains.

**BUYER:** ..... **PRICE \$** .....

**LOT 71 SUMMA ROMEO R64 (PP) VENDOR: Summa**



**ID:**  
JTDPRO64

**DOB:**  
21/12/2020

**S:** WOONALLEE JUSTIFIED J112  
**SIRE: BLUE DOG MANSFIELD**  
**D:** BOOLAROO VERONICA  
**S:** BLUE DOG HUNTER  
**DAM: BLUE DOG PETA 311**  
**D:** BLUE DOG PETA C0989

**COMMENTS**

A Homozygous Poll to kick off the young draft of bulls sired by Blue Dog Mansfield. True to his sire, Romeo offers plenty of softness, silk like skin, broad muzzle and a masculine head. He has been on our radar from a calf and is a tough one to let go.

**BUYER:** ..... **PRICE \$** .....

**LOT 74 SUMMA RUSTLER R60 (P) VENDOR: Summa**



**ID:**  
JTDPRO60

**DOB:**  
2/12/2020

**S:** WOONALLEE JUSTIFIED J112  
**SIRE: BLUE DOG MANSFIELD**  
**D:** BOOLAROO VERONICA  
**S:** CALLENDALE FRANK  
**DAM: WORMBETE BEATRIX M54**  
**D:** WORMBETE BEATRIX H21

**COMMENTS**

A bull that demonstrates evenness and consistent weight gains with the added bonus of being polled, Rustler is the first bull to be offered out of Wormbete Beatrix M54. The strength of her genetics is represented by the daughters retained in our stud herd that are already proving their worth.

**BUYER:** ..... **PRICE \$** .....

**LOT 72 SUMMA SAMSON S68 (P) VENDOR: Summa**



**ID:**  
JTDPS068

**DOB:**  
3/01/2021

**S:** WOONALLEE JUSTIFIED J112  
**SIRE: BLUE DOG MANSFIELD**  
**D:** BOOLAROO VERONICA  
**S:** BT SIMMENTALS KUDOS  
**DAM: LAKESIDE NATALIA**  
**D:** WATERFRONT KEONA

**COMMENTS**

Samson will be just shy of 19 months on sale day. He represents a solid package with his early maturity, hooded eyes and good display of meat and bone. Samson is deep sided with a strong frame, and his progeny will meet varying market opportunities.

**BUYER:** ..... **PRICE \$** .....

**LOT 75 SUMMA ROMAN R65 (H) VENDOR: Summa**



**ID:**  
JTDPRO65

**DOB:**  
24/12/2020

**S:** WOONALLEE JUSTIFIED J112  
**SIRE: BLUE DOG MANSFIELD**  
**D:** BOOLAROO VERONICA  
**S:** WORMBETE LEONARDO L108  
**DAM: SUMMA POPPY P15**  
**D:** WORMBETE BEATRIX M54

**COMMENTS**

Roman's dam line is the same as the previous lot. He is out of a daughter of Wormbete Beatrix M54, who as a first calf heifer has done more than a sufficient job through a trying time. This cross with Mansfield has proved to be a solid foundation, as evident through Roman's width and spring of rib.

**BUYER:** ..... **PRICE \$** .....

**VENDOR PROFILE: Grangeburn Simmentals**



**Brodhi Carracher**  
 0418 723 996  
 brodhicarracher@hotmail.com  
 Glenelg Highway  
 Wannon VIC 3301

Registering the prefix in 2013, Brodhi Carracher set home base for Grangeburn Simmental in Victoria's south-west at Wannon where extremes in season occur from scorching dry summers to waterlogged green winters. These conditions test the cattle year-round as they need to perform in the good times and the poor times.

Based on almost 700ha of grazing country, Grangeburn is currently running a commercial cow/calf operation alongside the seedstock operation of 120 registered Simmental and SimAngus females. On top of this the sheep enterprise produces prime lambs. No stone has been left unturned in the quest for genetics to breed the 'right type' for clients in both the northern or southern hemispheres. If it fits it is incorporated into the herd.

Grangeburn are in the industry to produce top end bulls for the astute cattlemen with value for money. Breeding traits are focused on mobility, durability, easy fleshing, slick skinned and well pigmented cattle with maternal calving ease.

To allow the cream to rise to the top with the above traits in mind Grangeburn prefers bulls to be run as one contemporary group from birth through to sale with minimal grain in their diet. The cheapest feed to produce per kilogram of dry matter is grass, so that's what Grangeburn cattle get until the scorching summer heat when they are given access to silage and low grain content pellets.

**LOT 76 GRANGEBURN RAREFIED (PP) (AI) VENDOR: Grangeburn**



**ID:** ZEUPR072  
**DOB:** 26/07/2020  
**S:** WORMBETE JACKAROO J64  
**SIRE:** WORMBETE MILLENIUM M91  
**D:** WORMBETE BRIDGET  
**S:** TUGULAWA LANCE  
**DAM:** WORMBETE NOLA P89  
**D:** WORMBETE NOLA L7

**COMMENTS**  
 Exciting prospect here, overall a high performance sire that stands on dense bone and a faultless structure. Out of a great first calving heifer that we purchased from Wormbete Simmental's. He's got it all in a homozygous polled package. Semen retained for in herd use.

**BUYER:** ..... **PRICE \$** .....

**LOT 77 GRANGEBURN REAL TALK (H) (ET) VENDOR: Grangeburn**



**ID:** ZEUPR032  
**DOB:** 5/04/2020  
**S:** ANCHOR "T" RUSTY 59G  
**SIRE:** STARWEST POL BLUEPRINT  
**D:** PHS HOMOZYGOUS XCEPTIONAL  
**S:** KLYBER  
**DAM:** JB CDN GIOVANNA 5025  
**D:** KNIGHT-FROST MISS JADE 1H

**COMMENTS**  
 Arguably the most complete bull we've ever offered. Soft muscle pattern, huge growth and again great bone on a faultless structure. Horned, however I really rate him highly so semen was retained for use in herd, whilst his full brother was retained in herd on stud duties.

**BUYER:** ..... **PRICE \$** .....

**LOT 78 GRANGEBURN ROGUE TRADER (P) (TW) VENDOR: Grangeburn**



**ID:** ZEUPR069  
**DOB:** 17/06/2020  
**S:** WOONALLEE JUSTIFIED J112  
**SIRE:** WOONALLEE MUSCLEMAN  
**D:** WOONALLEE ROSY J56  
**S:** WOONALLEE FLAME  
**DAM:** JURALEY L023  
**D:** WOONALLEE LADY SUSI E201

**COMMENTS**  
 Length and mobility in this soft made train of a bull. His dam, a donor in our herd, always produces a heavy weaner and has many daughters to be retained this year. His paternal brother sold for \$20,000 at last years QSBS to Springfield Simmental. Heterozygous polled.

**BUYER:** ..... **PRICE \$** .....

**LOT 79 GRANGEBURN REVOLVER (P) (ET) VENDOR: Grangeburn**

**ID:** ZEUPR040  
**DOB:** 9/04/2020  
**S:** ANCHOR "T" RUSTY 59G  
**SIRE:** STARWEST POL BLUEPRINT  
**D:** PHS HOMOZYGOUS XCEPTIONAL  
**S:** KLYBER  
**DAM:** JB CDN GIOVANNA 5025  
**D:** KNIGHT-FROST MISS JADE 1H

**COMMENTS**  
 A full ET brother to Real Talk at lot 77, he's a another ET calf who really put on the weight quickly as a calf. Again great feet and added frame. Heterozygous polled.

**BUYER:** ..... **PRICE \$** .....

**LOT 80 GRANGEBURN REBELLION (P) (TW) VENDOR: Grangeburn**



**ID:** ZEUPR080  
**DOB:** 5/09/2020  
**S:** CHAMPS BRAVO  
**SIRE:** GRANGEBURN MASTERS PRIDE  
**D:** WOONALLEE REGAL K13  
**S:** WOONALLEE BHR TORNADO  
**DAM:** WOONALLEE NONSENSE J80  
**D:** WOONALLEE NONSENSE E70

**COMMENTS**  
 R80 is a spring drop bull but frame wise he's close to the top of the group. He's a soft, lengthy calf with the soft muscle pattern and do-ability that his sire Masters Pride has passed down to him. Out of a high volume cow who produces the easy doing cattle. Heterozygous polled with small scur.

**BUYER:** ..... **PRICE \$** .....



**FAST FACT**  
 Simmental working today on every inhabited continent world wide

**LOT 81 GRANGEBURN RIVER (P) (TW)**

**VENDOR: Grangeburn**



**ID:**  
ZEUPR084

**DOB:**  
8/09/2020

**S:** CHAMPS BRAVO  
**SIRE: GRANGEBURN MASTERS PRIDE**  
**D:** WOONALLEE REGAL K13  
**S:** WOONALLEE ESSENDON  
**DAM: JURALEY DAISY H74**  
**D:** WOONALLEE DAISY C62

**COMMENTS**

Power and masses of hindquarter is what you'll get in these twin brothers at lot 81 & 82. They were reared together on a great old cow in H74 who never misses, and now they will sell together. Consistency here with Masters Pride on the top side. Heterozygous polled with small scurs.

**BUYER:** ..... **PRICE \$** .....

**LOT 82 GRANGEBURN REMINGTON (P) (TW)**

**VENDOR: Grangeburn**



**ID:**  
ZEUPR085

**DOB:**  
8/09/2020

**S:** CHAMPS BRAVO  
**SIRE: GRANGEBURN MASTERS PRIDE**  
**D:** WOONALLEE REGAL K13  
**S:** WOONALLEE ESSENDON  
**DAM: JURALEY DAISY H74**  
**D:** WOONALLEE DAISY C62

**COMMENTS**

Cut from the same mould as his twin brother at Lot 81, power and hindquarter in a mobile package. Heterozygous polled with small scurs.

**BUYER:** ..... **PRICE \$** .....

**VENDOR PROFILE: The Wilgas**



**Courtney and Joel**  
0476 639 925

**thewilgassimmentals@outlook.com**  
160 Lees Rd, Duri NSW 2344

The Wilgas comprises the best animals retained from what was formally known as the Lavarta Simmental Stud along with selected genetics bred and/or purchased by Joel Trim and Courtney Newlands. Their herd consists of predominantly Traditional Simmentals and includes many influential and desirable genetics well known within the Simmental Breeding Industry.

The Wilgas believes that the Traditional Simmental has a bright future as the preferred cross of choice over high grade Bos Indicus cattle and the Wilgas are dedicated to breeding for the all important Queensland market. The Wilgas has also established an impressive battery of AI Sires which will become a focus in the coming years and Joel and Courtney look forward to presenting bulls with some exciting new genetics suitable for the Queensland commercial or stud cattle producers in the years to come.

**LOT 83 HIGHRISE RED REDEMPTION (S) (R)**

**VENDOR: The Wilgas**

**ID:**  
HRLPR003

**DOB:**  
13/06/2020

**S:** WOONALLEE HUMDINGER  
**SIRE: HIGHRISE NITRO**  
**D:** HIGHRISE K4  
**S:** JB CDN HENNESSY 5005  
**DAM: HIGHRISE CHARLIE P005**  
**D:** HIGHRISE CHARLIE

**COMMENTS**

Red Redemption is a large visually appealing red coated sire. He is structurally correct and free moving with added length. Although he is scurred his pedigree is sure to appeal to many buyers.

**BUYER:** ..... **PRICE \$** .....

**LOT 84 THE WILGAS RUBBLE (P)**

**VENDOR: The Wilgas**



**ID:**  
JCTPR020

**DOB:**  
13/11/2020

**S:** LRX HP ROCKET 23Y  
**SIRE: LAVARTA MATRIX**  
**D:** LANGTON-GATE AUTUMN GIRL  
**S:** LANGTON-GATE PA009  
**DAM: AUSSIE PARK JENNI**  
**D:** WOONALLEE JEANNIE C45

**COMMENTS**

Rubble is the first Matrix bull to sell in '22 and there is a lot to like about the power and depth in this bull. He was selected for his overall soundness, length of body and exceptional temperament. Look for Rubble to add extra muscle and weight to your calves.

**BUYER:** ..... **PRICE \$** .....



**FAST FACT**

In some parts of Europe the Simmental is used as a dairy breed and in the United Kingdom the preference is for beef but not as a steer (i.e. bulls)

**LOT 85 THE WILGAS REBEL YELL (P) VENDOR: The Wilgas**

**ID:** JCTPR011  
**DOB:** 23/08/2020  
**S:** LRX HP ROCKET 23Y  
**SIRE: LAVARTA MATRIX**  
**D:** LANGTON-GATE AUTUMN GIRL  
**S:** SPRINGSIDE DRAGIN  
**DAM: LAVARTA LOLLY**  
**D:** WOONALLEE POLLY H229

**COMMENTS**  
 Rebel Yell is a very correct sire with extra length and ample bone. He is an easy doing, free moving bull with a great temperament. Rebel Yell sure has plenty to offer.

**BUYER:** ..... **PRICE \$** .....

**LOT 86 HIGHRISE RAFIKI (P) (R) VENDOR: The Wilgas**

**ID:** HRLPR005  
**DOB:** 17/07/2020  
**S:** BAR 5 SA HERO 823M  
**SIRE: JB CDN HENNESSY 5005**  
**D:** BHR HELGA M328E  
**S:** BH RIGHT TIME 520E  
**DAM: HIGHRISE RENE**  
**D:** VALLEY CREEK RENE

**COMMENTS**  
 Would you look at this genetic package. Rafiki is an embryo calf out of JB CDN Hennessy. He is a deep, easy doing bull with good balance and style. Rafiki offers a different mix to the genetic profile.

**BUYER:** ..... **PRICE \$** .....

**LOT 87 HIGHRISE RAPHAEL (P) VENDOR: The Wilgas**

**ID:** HRLPR008  
**DOB:** 4/08/2020  
**S:** WOONALLEE HUMDINGER  
**SIRE: HIGHRISE NITRO**  
**D:** HIGHRISE K4  
**S:** KUNTZ SHERIFF 8A  
**DAM: HIGHRISE WILLOW Q1**  
**D:** HIGHRISE WILLOW N1

**COMMENTS**  
 Raphael is packed full of genetic strength. His genetics consist of Woonallee Humdinger, Kuntz Sheriff and JB CDN Hennessy to name a few. Raphael is sound, easy doing and extremely correct.

**BUYER:** ..... **PRICE \$** .....

**LOT 88 THE WILGAS RASTUS (PP) VENDOR: The Wilgas**

**ID:** JCTPR007  
**DOB:** 5/08/2020  
**S:** LRX HP ROCKET 23Y  
**SIRE: LAVARTA MATRIX**  
**D:** LANGTON-GATE AUTUMN GIRL  
**S:** WOONALLEE DIMENSION  
**DAM: LAVARTA MACKENZIE**  
**D:** LAVARTA HONOUR

**COMMENTS**  
 Rastus is a nicely balanced, polled bull with plenty of softness and style. He is an easy doing, free moving bull carrying ample muscle and depth.

**BUYER:** ..... **PRICE \$** .....

**LOT 89 THE WILGAS RAINMAN (S) VENDOR: The Wilgas**

**ID:** JCTPR010  
**DOB:** 22/08/2020  
**S:** LRX HP ROCKET 23Y  
**SIRE: LAVARTA MATRIX**  
**D:** LANGTON-GATE AUTUMN GIRL  
**S:** WOONALLEE DIMENSION  
**DAM: LAVARTA MIKA**  
**D:** SPRINGSIDE HOLLYANDA

**COMMENTS**  
 With genetics such as Dimension and Rocket this young sire is bound to put frame into any progeny he produces. Rainman although horned has a great deal to offer. Dark red, double goggled with depth, thickness and class. He will do a job for any operation.

**BUYER:** ..... **PRICE \$** .....

**LOT 90 THE WILGAS REGALSON (PP) VENDOR: The Wilgas**

**ID:** JCTPR021  
**DOB:** 13/11/2020  
**S:** LRX HP ROCKET 23Y  
**SIRE: LAVARTA MATRIX**  
**D:** LANGTON-GATE AUTUMN GIRL  
**S:** GLEN ANTHONY Y-ARTA AY02  
**DAM: WOONALLEE REGAL N107**  
**D:** WOONALLEE REGAL L21

**COMMENTS**  
 Sired by Matrix and out of Woonalle Regal N107 who is sired by Glen Anthony Y-arta. Regalson has plenty offer, he is a polled and structurally correct sire with easy doing ability.

**BUYER:** ..... **PRICE \$** .....

**LOT 91 THE WILGAS RADAR (PP) VENDOR: The Wilgas**

**ID:** JCTPR018  
**DOB:** 31/10/2020  
**S:** LRX HP ROCKET 23Y  
**SIRE: LAVARTA MATRIX**  
**D:** LANGTON-GATE AUTUMN GIRL  
**S:** WOONALLEE DIMENSION  
**DAM: LAVARTA NEBRASKA**  
**D:** SPRINGSIDE LOREN

**COMMENTS**  
 Radar is a polled Matrix son packing plenty of length and depth. Out of a first calving heifer, he is a free moving bull with a sound structure and great temperament.

**BUYER:** ..... **PRICE \$** .....

**LOT 92 THE WILGAS RADIO GAGA (S) VENDOR: The Wilgas**

**ID:** JCTPR033  
**DOB:** 29/12/2020  
**S:** LRX HP ROCKET 23Y  
**SIRE: LAVARTA MATRIX**  
**D:** LANGTON-GATE AUTUMN GIRL  
**S:** TRINITY VALE KRUIZE  
**DAM: TRINITY VALE MADAME BUTTERFLY**  
**D:** HEAVENLEA AURORA

**COMMENTS**  
 Radio Gaga is a moderate framed, thick set Matrix son with excellent performance and style. He is one of the younger bulls of our offering.

**BUYER:** ..... **PRICE \$** .....

**LOT 93 THE WILGAS ROYAL TREASURE (P) VENDOR: The Wilgas**

**ID:** JCTPRO25  
**S:** LRX HP ROCKET 23Y  
**SIRE: LAVARTA MATRIX**  
**D:** LANGTON-GATE AUTUMN GIRL  
**DOB:** 27/11/2020  
**S:** WOONALLEE DIMENSION  
**DAM: LAVARTA NATIONAL TREASURE**  
**D:** AUSSIE PARK DAYDREAM

**COMMENTS**  
 Royal Treasure is a polled Matrix son with plenty of growing left to do at only 20 months of age. This young bull has a blend of thickness, muscle and depth over a moderate frame.

**BUYER:** ..... **PRICE \$** .....

**LOT 94 THE WILGAS SOLACE (P) VENDOR: The Wilgas**



**ID:** JCTPS007  
**S:** LRX HP ROCKET 23Y  
**SIRE: LAVARTA MATRIX**  
**D:** LANGTON-GATE AUTUMN GIRL  
**DOB:** 16/01/2021  
**S:** CORINDADOWNS DELIVER  
**DAM: WOONALLEE POLLY H229**  
**D:** WOONALLEE POLLY A35

**COMMENTS**  
 At only 18 months this young sire is a thick set, true to type Matrix son. Solace has stood out from an early age for his extra performance and power. Hard to miss and hard not to be impressed by this young calf.

**BUYER:** ..... **PRICE \$** .....

**VENDR PROFILE: Mount Mooney**



**MT MOONEY SIMMENTALS**

**Quentin and Renee Mooney**  
 0438 011 800  
 renee@mtmooney.com.au  
 Tintinara, SA, 5266

Mt Mooney Simmentals was established in 2008 after trialling many different British & European cattle breeds in our commercial beef operation. Ultimately, we landed with the Simmental breed as it possessed not only the desired attributes for our commercial beef operation but also aligned with our desire to enter the stud breeding market.

In addition to its own stud breeding enterprise Mt Mooney currently runs 200 commercial beef cows on two properties in the upper south east of South Australia (Tintinara). This commercial focus has enabled Mount Mooney to produce Simmental Bulls that achieve exceptional carcass results.

Over time Mt Mooney has purchased both heifers and bulls from some of the leading Simmental studs in the country and have undertaken an extensive embryo transplant program which has already displayed some very promising results. These years of effort, hard work and genetic selection has meant that Mount Mooney now has the consistency and volume of bulls to expand nationally and we are pleased to be part of the Queensland Simmental Bull Sale in Central Queensland.

**LOT 95 MT MOONEY RE INJECTION (P) VENDOR: Mount Mooney**



**ID:** ZOMPRO11  
**S:** WOONALLEE JUMBO  
**SIRE: BARANA NOTTINGHAM**  
**D:** BARANA GOSSIP GIRL  
**DOB:** 22/03/2020  
**S:** BAR 5 SA BURNER 825R  
**DAM: MT MOONEY HONOLULU**  
**D:** AUSCAN ANITA

**COMMENTS**  
 Tremendously long bull standing on very good structure with great feet & legs. Tidy underneath and with an excellent temperament. Temperament is a feature of the MT Mooney bulls, ensuring they are easily managed by the whole family. MT Mooney bulls have been acclimatised and ready to go and work.

**BUYER:** ..... **PRICE \$** .....

**LOT 96 MT MOONEY RODGE (H) (AI) VENDOR: Mount Mooney**



**ID:** ZOMPRO02  
**S:** WAI-ITI HIGH RISER  
**SIRE: GLEN ANTHONY Y-ARTA AY02**  
**D:** WILLOWBROOK URSULINA AU18  
**DOB:** 22/02/2020  
**S:** PHS BANK ROLL 345B  
**DAM: MT MOONEY PAULA**  
**D:** MT MOONEY MYSTERY8

**COMMENTS**  
 A young bull with plenty of bone, length and depth of flank. Standing on very good feet and legs in addition to some serious grunt, makes this young sire one not to pass by. Rodge is a MT Mooney show heifers first calf and was born easily.

**BUYER:** ..... **PRICE \$** .....



**LOT 97 MT MOONEY RELIEF (P)      VENDOR: Mount Mooney**



**ID:**  
ZOMPR012

**DOB:**  
22/03/2020

**COMMENTS**

This early maturing structurally sound young bull with plenty of depth, a great temperament and standing on good bone. A bull bred from a very strong female line, with the dam being an embryo transplant daughter of Yerwal Estate Taylor. Ready to go out and work in Queensland conditions.

**S:** WOONALLEE JUMBO

**SIRE:** BARANA NOTTINGHAM

**D:** BARANA GOSSIP GIRL

**S:** BAR 5 SA BENZ 415L

**DAM:** MT MOONEY NAE BELLE

**D:** YERWAL EST TAYLOR

BUYER: ..... PRICE \$ .....

**LOT 98 MT MOONEY REWARD (PP) (ET) (AI)      VENDOR: Mount Mooney**



**ID:**  
ZOMPR019

**DOB:**  
5/07/2020

**COMMENTS**

This ET Homo polled bull is the youngest bull from the MT Mooney selection, being a July drop calf. He is an early maturing style bull with plenty of power and depth, and structurally Sound. Weight for age and temperament are notable features of this young bull ready to go out and do the job.

**S:** WOONALLEE LOS ANGELES

**SIRE:** YERWAL EST POWER PLAY

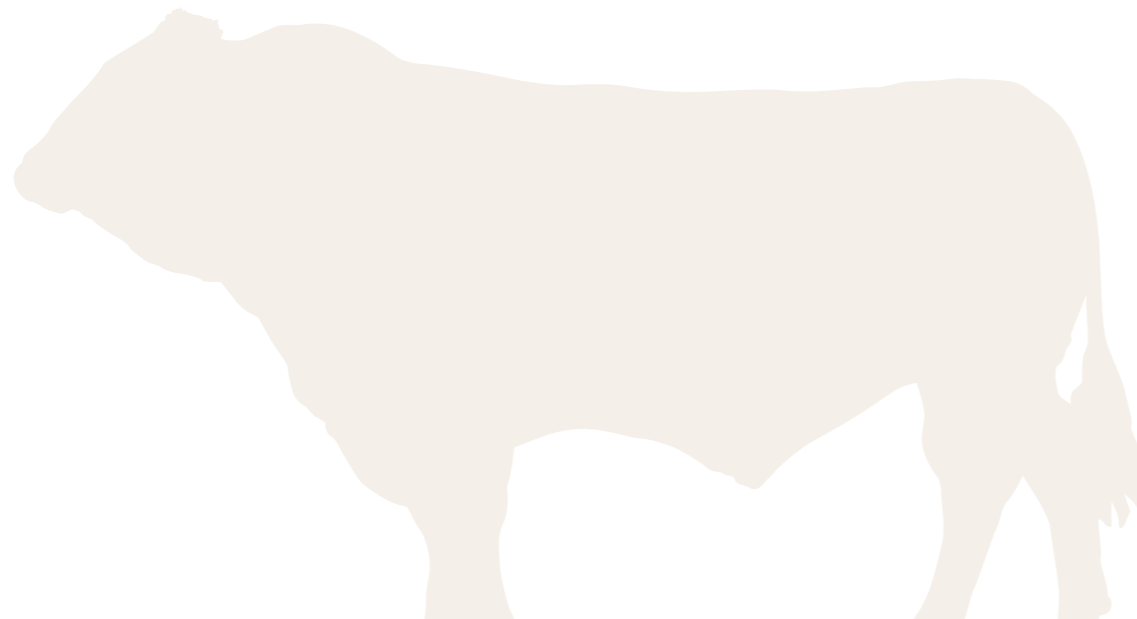
**D:** YERWAL EST KOMPLEAT

**S:** TENNYSONVALE HUGO

**DAM:** TENNYSONVALE MABEL

**D:** TENNYSONVALE ABELL

BUYER: ..... PRICE \$ .....



**VENDOR PROFILE: Nangur**



**Don and Gail Louis**  
0429 192 610  
dgandglouis@bigpond.com  
5781 Burnett Highway  
GOOMERI, QLD 4601

After more than 40 years breeding in Goomeri, Queensland, Nangur Simmentals pride themselves on quiet, fast growing and fertile cattle suitable for the commercial cattle producer.

When you are on a good thing stick to it and Nangurs breeding objectives since 1985 remain the same today "to produce fast growing fertile and gentle bulls along with females known for their high pregnancy rate and calving ease". After 35 years Nangur females have a high fertility rate. The Stud Principal is also very particular about such important features as correct eye pigment, structural correctness and sound feet.

**LOT 99 NANGUR R052 (H)      VENDOR: Nangur**



**ID:**  
LODPR052

**DOB:**  
28/05/2020

**COMMENTS**

A long bull with muscle depth and an easy going attitude.

**S:** TRINITY VALE HEWITT

**SIRE:** NANGUR HEUESON

**D:** NANGUR K304

**S:** TRINITY VALE HEWITT

**DAM:** NANGUR N703

**D:** NANGUR J273

BUYER: ..... PRICE \$ .....

**LOT 100 NANGUR R054 (H)      VENDOR: Nangur**

**ID:**  
LODPR054

**DOB:**  
13/06/2020

BUYER: ..... PRICE \$ .....

**S:** TRINITY VALE HEWITT

**SIRE:** NANGUR HEUESON

**D:** NANGUR K304

**S:** AUSSIE PARK ERNEST

**DAM:** NANGUR N363

**D:** NANGUR J284

**COMMENTS**

This bull has a lot of potential good width, length and breadth.



**FAST FACT**

110 Bulls selected from 2400 purebred females. Where else can a Simmental genetic pool this broad be accessed in Australia or Worldwide at one sale.

**LOT 101 NANGUR R056 (P) VENDOR: Nangur**

**ID:** LODPR056 **S:** TRINITY VALE HEWITT **COMMENTS:** Polled DNA tetsed Homozygous , well grown bull, one of the heaviest in our draft.

**DOB:** 15/06/2020 **SIRE:** NANGUR HEUESON **D:** NANGUR K304

**S:** AUSSIE PARK ERNEST **DAM:** NANGUR L327 **D:** NANGUR G238

**BUYER:** ..... **PRICE \$** .....

**LOT 102 NANGUR R057 (H) VENDOR: Nangur**

**ID:** LODPR057 **S:** TRINITY VALE HEWITT **COMMENTS:** A good sized bull, good growth rate, long and soft.

**DOB:** 19/06/2020 **SIRE:** NANGUR HEUESON **D:** NANGUR K304

**S:** AUSSIE PARK ERNEST **DAM:** NANGUR H268 **D:** NANGUR E196

**BUYER:** ..... **PRICE \$** .....

**LOT 103 NANGUR R058 (P) (TW) VENDOR: Nangur**

**ID:** LODPR058 **S:** SPRINGSIDE DRAGIN **COMMENTS:** Polled Heterozgous bull with plenty of potential to produce a great calf

**DOB:** 17/06/2020 **SIRE:** SPRINGSIDE NATIONAL **D:** SPRINGSIDE DELORA

**S:** AUSSIE PARK ERNEST **DAM:** NANGUR M337 **D:** NANGUR C176

**BUYER:** ..... **PRICE \$** .....

**LOT 104 NANGUR R059 (P) VENDOR: Nangur**

**ID:** LODPR059 **S:** SPRINGSIDE DRAGIN **COMMENTS:** Polled Heterozgous bull showing plenty of length and muscle.

**DOB:** 1/07/2020 **SIRE:** SPRINGSIDE NATIONAL **D:** SPRINGSIDE DELORA

**S:** AUSSIE PARK ERNEST **DAM:** NANGUR M328 **D:** NANGUR H256

**BUYER:** ..... **PRICE \$** .....

**LOT 105 NANGUR R060 (P) VENDOR: Nangur**

**ID:** LODPR060 **S:** TRINITY VALE HEWITT **COMMENTS:** Polled DNA tested Homozygous with potential to improve your herd.

**DOB:** 3/07/2020 **SIRE:** NANGUR HEUESON **D:** NANGUR K304

**S:** AUSSIE PARK ERNEST **DAM:** NANGUR N352 **D:** NANGUR J281

**BUYER:** ..... **PRICE \$** .....

**LOT 106 NANGUR R061 (H) VENDOR: Nangur**

**ID:** LODPR061 **S:** SPRINGSIDE DRAGIN **COMMENTS:** Good doing, well muscled and ready to work.

**DOB:** 7/07/2020 **SIRE:** SPRINGSIDE NATIONAL **D:** SPRINGSIDE DELORA

**S:** TRINITY VALE HEWITT **DAM:** NANGUR N711 **D:** NANGUR J285

**BUYER:** ..... **PRICE \$** .....

**LOT 107 NANGUR R062 (H) VENDOR: Nangur**

**ID:** LODPR062 **S:** SPRINGSIDE DRAGIN **COMMENTS:** Easy moving bull with plenty of good points.

**DOB:** 7/07/2020 **SIRE:** SPRINGSIDE NATIONAL **D:** SPRINGSIDE DELORA

**S:** AUSSIE PARK ERNEST **DAM:** NANGUR K304 **D:** NANGUR D181

**BUYER:** ..... **PRICE \$** .....

**LOT 108 NANGUR R064 (P) VENDOR: Nangur**



**ID:** LODPR064 **S:** SPRINGSIDE DRAGIN

**SIRE:** SPRINGSIDE NATIONAL **D:** SPRINGSIDE DELORA

**DOB:** 9/07/2020 **S:** AUSSIE PARK ERNEST **DAM:** NANGUR J274 **D:** NANGUR E210

**COMMENTS:** Polled Heterozgous bull with good length , depth and width.

**BUYER:** ..... **PRICE \$** .....

**LOT 109 NANGUR R066 (P) VENDOR: Nangur**

**ID:** LODPR066  
**S:** SPRINGSIDE DRAGIN  
**SIRE: SPRINGSIDE NATIONAL**  
**D:** SPRINGSIDE DELORA  
**DOB:** 23/07/2020  
**S:** AUSSIE PARK ERNEST  
**DAM: NANGUR L315**  
**D:** NANGUR D191

**COMMENTS**  
 Polled Heterozgous bull with good length , depth and width and great temperment.

**BUYER:** ..... **PRICE \$** .....

**LOT 111 SPRINGSIDE RILEY R071 (P) VENDOR: Springside**



**ID:** PTRPR071  
**S:** PROSTOCK HUGO 7052T  
**SIRE: VALLEY CREEK JAMES 019**  
**D:** WOONALLEE HEDWIG C130  
**DOB:** 23/08/2020  
**S:** SPRINGSIDE ELDORADO  
**DAM: SPRINGSIDE JILLY**  
**D:** SPRINGSIDE EARTHA

**COMMENTS**  
 An outstanding young sire. Great mobility, muscling, sound structure and an excellent temperament. From an outstanding line of exceptional females. Riley will not disappoint.

**BUYER:** ..... **PRICE \$** .....

**VENDOR PROFILE: Springside Simmentals**



**Peter and Toni**  
 0427 800 522  
 springside@skymesh.com.au  
 357 Irongate Rd  
 Springside QLD 4356

Since the birth of our first Simmental calf in 1975 we have seen the Simmental breed slowly gain popularity within Australia and Springside has continually evolved and adapted over this long period. The Simmental has proven itself again and again and has shown that both bulls and females can produce quality, weighty offspring that ultimately result in better returns for the commercial breeder.

Springside Simmentals is owned by Peter and Toni Rauchle at "Springside" near Pittsworth QLD. Springside currently run around 150 breeders from which they have sold bulls and females throughout the Eastern States of Australia for many years

Today's Springside Simmentals and their crosses produce earlier finishing calves, have great weight-for-age, muscling and carcass yield attributes and have all the benefits synonymous with the Simmental Breed.

Springside is one of Queensland and Australia's oldest Simmental Stud Breeding Operations.

**LOT 112 SPRINGSIDE RYKER (PP) VENDOR: Springside**



**ID:** PTRPR198  
**S:** WOONALLEE HALF BACK  
**SIRE: LAVARTA MAGNITUDE**  
**D:** LAVARTA HERD ABOUT ME  
**DOB:** 4/10/2020  
**S:** MALA-DAKI MICK X165  
**DAM: SPRINGSIDE MILLIE M189**  
**D:** SPRINGSIDE JILLY

**COMMENTS**  
 In any herd, Ryker can certainly stand on his outstanding lineage from both Sire and Dam and produce terrific calves. Smooth, well muscled, good temperament and moves fluently. Homo Polled and Homo Red.

**BUYER:** ..... **PRICE \$** .....

**LOT 110 SPRINGSIDE RIMFIRE (P) VENDOR: Springside**



**ID:** PTRPR030  
**S:** WOONALLEE BOAST  
**SIRE: BLUE DOG KALGOORLIE**  
**D:** BLUE DOG SOLITA D248  
**DOB:** 16/04/2020  
**S:** GIBBY'S REAL DEAL 25T  
**DAM: SPRINGSIDE MINNIE**  
**D:** SPRINGSIDE HODENA

**COMMENTS**  
 Rimfire is an outstanding bull who exhibits muscle, sound structure, a great top line and huge performance. Polled and from a long line of performance plus females he will deliver calves of value.

**BUYER:** ..... **PRICE \$** .....

**LOT 113 SPRINGSIDE RAYNALD (S) VENDOR: Springside**



**ID:** PTRPR703  
**S:** PROSTOCK HUGO 7052T  
**SIRE: VALLEY CREEK JAMES 019**  
**D:** WOONALLEE HEDWIG C130  
**DOB:** 28/12/2020  
**S:** WOONALLEE FOREFRONT  
**DAM: SPRINGSIDE NARNIA**  
**D:** SPRINGSIDE 705/15

**COMMENTS**  
 With Valley Creek James and Woonallee Forefront in your blood line, no cattle breeder would go without by purchasing this young bull. Stamina, well balanced, good skin and a great topline.

**BUYER:** ..... **PRICE \$** .....



**ID:**  
PTRPR750

**DOB:**  
30/12/2020

**COMMENTS**

Rushmore may be the youngest of the Springside draft but he has a lot to offer. Excellent lineage on both sides, mobility, muscle, balance and style.

**S:** PROSTOCK HUGO 7052T

**SIRE:** VALLEY CREEK JAMES 019

**D:** WOONALLEE HEDWIG C130

**S:** WOONALLEE FOREFRONT

**DAM:** SPRINGSIDE MARLINDE

**D:** NOANGA BARONESS

BUYER: ..... PRICE \$ .....



**FAST FACT**

Simmental - the preferred cross for both Bos Indicus and British Herds.

# CONTACTS

**BONNYDALE QLD BLACK SIMMENTALS**

Jake Berghofer and Emma Patterson, "Barambah Dale" Moffatdale QLD 4605  
PHONE 0418 649 666 EMAIL qld@bonnydalesimmentals.com

**DARAABAH FLECKVIEH • SIMMENTAL**

Bruce and Melinda McColl, 7R Jones Creek Road, Dubbo NSW 2830  
PHONE 0429 750 590 EMAIL bruce@daraabah.com.au

**GRANGEBURN SIMMENTALS**

Brodhi Carracher, Glenelg Highway, Wannon VIC 3301  
PHONE 0418 723 996 EMAIL brodhicarracher@hotmail.com

**JARRAVALE SIMMENTALS**

Allan Jarrett, 45 Greenpigeon Road, Horseshoe Creek, Kyogle, NSW 2474  
PHONE 0427 331 204 EMAIL jarravalepastoral@bigpond.com

**LONE STATION SIMMENTALS**

Steven Manwill, 1154 Kipper Creek Road, Biarra, QLD 4313  
PHONE 0416 229 171 EMAIL smanwill@pharosinvestments.com.au

**MT MOONEY SIMMENTALS**

Quentin and Renee Mooney, Tintinara, SA, 5266  
PHONE 0438 011 800 EMAIL renee@mtmooney.com.au

**NANGUR SIMMENTALS**

Don and Gail Louis, 5781 Burnett Highway, Goomeri, QLD 4601  
PHONE 0429 192 610 EMAIL dgandglouis@bigpond.com

**SPRINGSIDE SIMMENTALS**

Peter and Toni, 357 Irongate Rd, Springside QLD 4356  
PHONE 0427 800 522 EMAIL springside@skymesh.com.au

**SUMMA SIMMENTALS**

Jack and Tara Dumba, "Emoh Ruo" May Downs - Carfax Road Middlemount QLD 4746  
PHONE 0400 718 481 EMAIL dumma10@bigpond.com

**THE WILGAS SIMMENTALS**

Courtney and Joel, 160 Lees Rd, Duri NSW 2344  
PHONE 0476 639 925 EMAIL thewilgassimmentals@outlook.com

**TULLAYR SIMMENTALS**

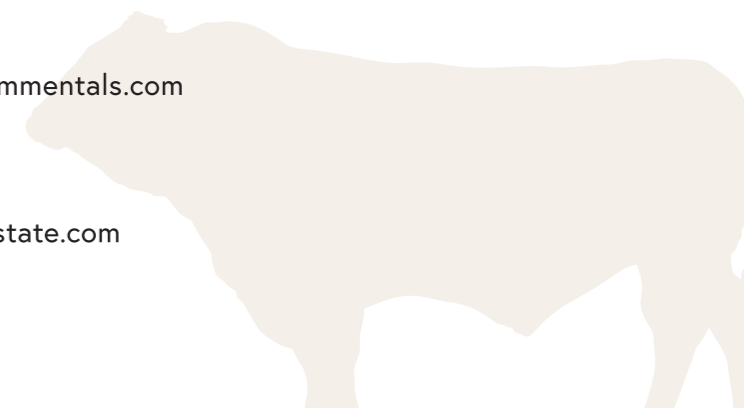
George Wragge, PO Box 281, Scone NSW 2337  
PHONE 0410 014 754 EMAIL tullayr@gmail.com

**WOONALLEE SIMMENTALS**

Tom Baker, Millicent, South Australia  
PHONE 0428 475 066 WEB www.woonalleesimmentals.com

**YERWAL ESTATE SIMMENTAL & ANGUS STUD**

Regan Burrow, Lawreys Road, Naracoorte SA 5271  
PHONE 0419 817 669 EMAIL regan@yerwalestate.com







[QLDSIMMENTALBULLSALE.COM.AU](http://QLDSIMMENTALBULLSALE.COM.AU)